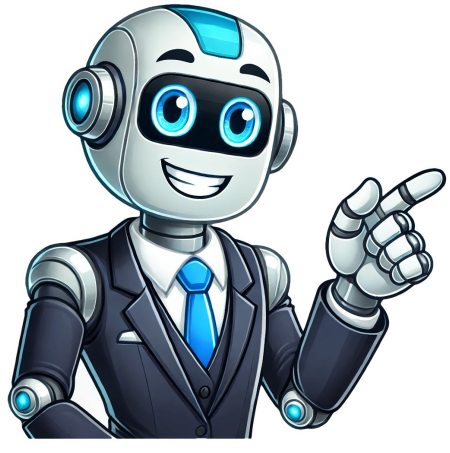


I'm not a robot































Page You will get AHSEC CLASS 12 English Revised and Reduced Syllabus for 2023-24. Also Link for Chapter wise notes are given with the chapter name. Students are expected to have acquired a reasonable degree of language proficiency in English by the time they come to class XII, and the course will aim, essentially, at promoting the higher-order language skills. For a large number of students, the higher secondary stage will be a preparation for the university, where a fairly high degree of proficiency in English may be required. But for another large group, the higher secondary stage may be a preparation for entry into the world of work. The Core Course should cater to both groups by promoting the language skills required for academic study as well as the language skills required for the workplace. Objectives: The general objectives at this stage are: 1. to listen to and comprehend live as well as recorded oral presentations on a variety of topics. 2. To develop greater confidence and proficiency in the use of language skills necessary for social and academic purposes. 3. To participate in group discussions/interviews, making short oral presentations on given topics. 4. To perceive the overall meaning and organisation of the text (i.e., the relationships of the different "chunks" in the text to each other). 5. To identify the central/main point and supporting details, etc. 6. To build communicative competence in various registers of English. 7. To promote advanced language skills with an aim to develop the skills of reasoning, drawing inferences, etc. through meaningful activities. 8. To translate texts from mother tongue (s) into English and vice versa. 9. To develop ability and knowledge required in order to engage in independent reflection and enquiry. 10. To develop the capacity to appreciate the literary use of English and also use English creatively and imaginatively. ENGLISH CORE NEW SYLLABUS [AHSEC CLASS 12 NEW SYLLABUS FOR 2024-25] MOTHER ONE paper 3 Hours-Marks: 100. Unit Areas of Learning Marks A. Section-1: Reading Unseen Passage: 10 Marks B. Section-2: Writing: 10 Marks C. Section-3: Grammar: 20 Marks D. Section-4: Literature: 10 Marks E. Section-5: Transformation Sentences: 4 Marks F. Section-6: Prescribed Textbooks: 10 Marks G. Section-7: Direct and Indirect Speech: 10 Marks H. Section-8: Direct and Indirect Questions: 10 Marks I. Section-9: Direct and Indirect Questions: 10 Marks J. Section-10: Direct and Indirect Questions: 10 Marks K. Section-11: Direct and Indirect Questions: 10 Marks L. Section-12: Direct and Indirect Questions: 10 Marks M. Section-13: Direct and Indirect Questions: 10 Marks N. Section-14: Direct and Indirect Questions: 10 Marks O. Section-15: Direct and Indirect Questions: 10 Marks P. Section-16: Direct and Indirect Questions: 10 Marks Q. Section-17: Direct and Indirect Questions: 10 Marks R. Section-18: Direct and Indirect Questions: 10 Marks S. Section-19: Direct and Indirect Questions: 10 Marks T. Section-20: Direct and Indirect Questions: 10 Marks U. Section-21: Direct and Indirect Questions: 10 Marks V. Section-22: Direct and Indirect Questions: 10 Marks W. Section-23: Direct and Indirect Questions: 10 Marks X. Section-24: Direct and Indirect Questions: 10 Marks Y. Section-25: Direct and Indirect Questions: 10 Marks Z. Section-26: Direct and Indirect Questions: 10 Marks AA. Section-27: Direct and Indirect Questions: 10 Marks AB. Section-28: Direct and Indirect Questions: 10 Marks AC. Section-29: Direct and Indirect Questions: 10 Marks AD. Section-30: Direct and Indirect Questions: 10 Marks AE. Section-31: Direct and Indirect Questions: 10 Marks AF. Section-32: Direct and Indirect Questions: 10 Marks AG. Section-33: Direct and Indirect Questions: 10 Marks AH. Section-34: Direct and Indirect Questions: 10 Marks AI. Section-35: Direct and Indirect Questions: 10 Marks AJ. Section-36: Direct and Indirect Questions: 10 Marks AK. Section-37: Direct and Indirect Questions: 10 Marks AL. Section-38: Direct and Indirect Questions: 10 Marks AM. Section-39: Direct and Indirect Questions: 10 Marks AN. Section-40: Direct and Indirect Questions: 10 Marks AO. Section-41: Direct and Indirect Questions: 10 Marks AP. Section-42: Direct and Indirect Questions: 10 Marks AQ. Section-43: Direct and Indirect Questions: 10 Marks AR. Section-44: Direct and Indirect Questions: 10 Marks AS. Section-45: Direct and Indirect Questions: 10 Marks AT. Section-46: Direct and Indirect Questions: 10 Marks AU. Section-47: Direct and Indirect Questions: 10 Marks AV. Section-48: Direct and Indirect Questions: 10 Marks AW. Section-49: Direct and Indirect Questions: 10 Marks AX. Section-50: Direct and Indirect Questions: 10 Marks AY. Section-51: Direct and Indirect Questions: 10 Marks AZ. Section-52: Direct and Indirect Questions: 10 Marks BA. Section-53: Direct and Indirect Questions: 10 Marks BB. Section-54: Direct and Indirect Questions: 10 Marks BC. Section-55: Direct and Indirect Questions: 10 Marks BD. Section-56: Direct and Indirect Questions: 10 Marks BE. Section-57: Direct and Indirect Questions: 10 Marks BF. Section-58: Direct and Indirect Questions: 10 Marks BG. Section-59: Direct and Indirect Questions: 10 Marks BH. Section-60: Direct and Indirect Questions: 10 Marks BI. Section-61: Direct and Indirect Questions: 10 Marks BJ. Section-62: Direct and Indirect Questions: 10 Marks BK. Section-63: Direct and Indirect Questions: 10 Marks BL. Section-64: Direct and Indirect Questions: 10 Marks BM. Section-65: Direct and Indirect Questions: 10 Marks BN. Section-66: Direct and Indirect Questions: 10 Marks BO. Section-67: Direct and Indirect Questions: 10 Marks BP. Section-68: Direct and Indirect Questions: 10 Marks BQ. Section-69: Direct and Indirect Questions: 10 Marks BR. Section-70: Direct and Indirect Questions: 10 Marks BS. Section-71: Direct and Indirect Questions: 10 Marks BT. Section-72: Direct and Indirect Questions: 10 Marks BU. Section-73: Direct and Indirect Questions: 10 Marks BV. Section-74: Direct and Indirect Questions: 10 Marks BW. Section-75: Direct and Indirect Questions: 10 Marks BX. Section-76: Direct and Indirect Questions: 10 Marks BY. Section-77: Direct and Indirect Questions: 10 Marks BZ. Section-78: Direct and Indirect Questions: 10 Marks CA. Section-79: Direct and Indirect Questions: 10 Marks CB. Section-80: Direct and Indirect Questions: 10 Marks CC. Section-81: Direct and Indirect Questions: 10 Marks CD. Section-82: Direct and Indirect Questions: 10 Marks CE. Section-83: Direct and Indirect Questions: 10 Marks CF. Section-84: Direct and Indirect Questions: 10 Marks CG. Section-85: Direct and Indirect Questions: 10 Marks CH. Section-86: Direct and Indirect Questions: 10 Marks CI. Section-87: Direct and Indirect Questions: 10 Marks CJ. Section-88: Direct and Indirect Questions: 10 Marks CK. Section-89: Direct and Indirect Questions: 10 Marks CL. Section-90: Direct and Indirect Questions: 10 Marks CM. Section-91: Direct and Indirect Questions: 10 Marks CN. Section-92: Direct and Indirect Questions: 10 Marks CO. Section-93: Direct and Indirect Questions: 10 Marks CP. Section-94: Direct and Indirect Questions: 10 Marks CQ. Section-95: Direct and Indirect Questions: 10 Marks CR. Section-96: Direct and Indirect Questions: 10 Marks CS. Section-97: Direct and Indirect Questions: 10 Marks CT. Section-98: Direct and Indirect Questions: 10 Marks CU. Section-99: Direct and Indirect Questions: 10 Marks CV. Section-100: Direct and Indirect Questions: 10 Marks CW. Section-101: Direct and Indirect Questions: 10 Marks CX. Section-102: Direct and Indirect Questions: 10 Marks CY. Section-103: Direct and Indirect Questions: 10 Marks CZ. Section-104: Direct and Indirect Questions: 10 Marks DA. Section-105: Direct and Indirect Questions: 10 Marks DB. Section-106: Direct and Indirect Questions: 10 Marks DC. Section-107: Direct and Indirect Questions: 10 Marks DD. Section-108: Direct and Indirect Questions: 10 Marks DE. Section-109: Direct and Indirect Questions: 10 Marks DF. Section-110: Direct and Indirect Questions: 10 Marks DG. Section-111: Direct and Indirect Questions: 10 Marks DH. Section-112: Direct and Indirect Questions: 10 Marks DI. Section-113: Direct and Indirect Questions: 10 Marks DJ. Section-114: Direct and Indirect Questions: 10 Marks DK. Section-115: Direct and Indirect Questions: 10 Marks DL. Section-116: Direct and Indirect Questions: 10 Marks DM. Section-117: Direct and Indirect Questions: 10 Marks DN. Section-118: Direct and Indirect Questions: 10 Marks DO. Section-119: Direct and Indirect Questions: 10 Marks DP. Section-120: Direct and Indirect Questions: 10 Marks DQ. Section-121: Direct and Indirect Questions: 10 Marks DR. Section-122: Direct and Indirect Questions: 10 Marks DS. Section-123: Direct and Indirect Questions: 10 Marks DT. Section-124: Direct and Indirect Questions: 10 Marks DU. Section-125: Direct and Indirect Questions: 10 Marks DV. Section-126: Direct and Indirect Questions: 10 Marks DW. Section-127: Direct and Indirect Questions: 10 Marks DX. Section-128: Direct and Indirect Questions: 10 Marks DY. Section-129: Direct and Indirect Questions: 10 Marks DZ. Section-130: Direct and Indirect Questions: 10 Marks EA. Section-131: Direct and Indirect Questions: 10 Marks EB. Section-132: Direct and Indirect Questions: 10 Marks EC. Section-133: Direct and Indirect Questions: 10 Marks ED. Section-134: Direct and Indirect Questions: 10 Marks EE. Section-135: Direct and Indirect Questions: 10 Marks EF. Section-136: Direct and Indirect Questions: 10 Marks EG. Section-137: Direct and Indirect Questions: 10 Marks EH. Section-138: Direct and Indirect Questions: 10 Marks EI. Section-139: Direct and Indirect Questions: 10 Marks EJ. Section-140: Direct and Indirect Questions: 10 Marks EK. Section-141: Direct and Indirect Questions: 10 Marks EL. Section-142: Direct and Indirect Questions: 10 Marks EM. Section-143: Direct and Indirect Questions: 10 Marks EN. Section-144: Direct and Indirect Questions: 10 Marks EO. Section-145: Direct and Indirect Questions: 10 Marks EP. Section-146: Direct and Indirect Questions: 10 Marks EQ. Section-147: Direct and Indirect Questions: 10 Marks ER. Section-148: Direct and Indirect Questions: 10 Marks ES. Section-149: Direct and Indirect Questions: 10 Marks ET. Section-150: Direct and Indirect Questions: 10 Marks EU. Section-151: Direct and Indirect Questions: 10 Marks EV. Section-152: Direct and Indirect Questions: 10 Marks EW. Section-153: Direct and Indirect Questions: 10 Marks EX. Section-154: Direct and Indirect Questions: 10 Marks EY. Section-155: Direct and Indirect Questions: 10 Marks EZ. Section-156: Direct and Indirect Questions: 10 Marks FA. Section-157: Direct and Indirect Questions: 10 Marks FB. Section-158: Direct and Indirect Questions: 10 Marks FC. Section-159: Direct and Indirect Questions: 10 Marks FD. Section-160: Direct and Indirect Questions: 10 Marks FE. Section-161: Direct and Indirect Questions: 10 Marks FF. Section-162: Direct and Indirect Questions: 10 Marks FG. Section-163: Direct and Indirect Questions: 10 Marks FH. Section-164: Direct and Indirect Questions: 10 Marks FI. Section-165: Direct and Indirect Questions: 10 Marks FJ. Section-166: Direct and Indirect Questions: 10 Marks FK. Section-167: Direct and Indirect Questions: 10 Marks FL. Section-168: Direct and Indirect Questions: 10 Marks FM. Section-169: Direct and Indirect Questions: 10 Marks FN. Section-170: Direct and Indirect Questions: 10 Marks FO. Section-171: Direct and Indirect Questions: 10 Marks FP. Section-172: Direct and Indirect Questions: 10 Marks FQ. Section-173: Direct and Indirect Questions: 10 Marks FR. Section-174: Direct and Indirect Questions: 10 Marks FS. Section-175: Direct and Indirect Questions: 10 Marks FT. Section-176: Direct and Indirect Questions: 10 Marks FU. Section-177: Direct and Indirect Questions: 10 Marks FV. Section-178: Direct and Indirect Questions: 10 Marks FW. Section-179: Direct and Indirect Questions: 10 Marks FX. Section-180: Direct and Indirect Questions: 10 Marks FY. Section-181: Direct and Indirect Questions: 10 Marks FZ. Section-182: Direct and Indirect Questions: 10 Marks GA. Section-183: Direct and Indirect Questions: 10 Marks GB. Section-184: Direct and Indirect Questions: 10 Marks GC. Section-185: Direct and Indirect Questions: 10 Marks GD. Section-186: Direct and Indirect Questions: 10 Marks GE. Section-187: Direct and Indirect Questions: 10 Marks GF. Section-188: Direct and Indirect Questions: 10 Marks GG. Section-189: Direct and Indirect Questions: 10 Marks GH. Section-190: Direct and Indirect Questions: 10 Marks GI. Section-191: Direct and Indirect Questions: 10 Marks GJ. Section-192: Direct and Indirect Questions: 10 Marks GK. Section-193: Direct and Indirect Questions: 10 Marks GL. Section-194: Direct and Indirect Questions: 10 Marks GM. Section-195: Direct and Indirect Questions: 10 Marks GN. Section-196: Direct and Indirect Questions: 10 Marks GO. Section-197: Direct and Indirect Questions: 10 Marks GP. Section-198: Direct and Indirect Questions: 10 Marks GQ. Section-199: Direct and Indirect Questions: 10 Marks GR. Section-200: Direct and Indirect Questions: 10 Marks GS. Section-201: Direct and Indirect Questions: 10 Marks GT. Section-202: Direct and Indirect Questions: 10 Marks GU. Section-203: Direct and Indirect Questions: 10 Marks GV. Section-204: Direct and Indirect Questions: 10 Marks GW. Section-205: Direct and Indirect Questions: 10 Marks GX. Section-206: Direct and Indirect Questions: 10 Marks GY. Section-207: Direct and Indirect Questions: 10 Marks GZ. Section-208: Direct and Indirect Questions: 10 Marks HA. Section-209: Direct and Indirect Questions: 10 Marks HB. Section-210: