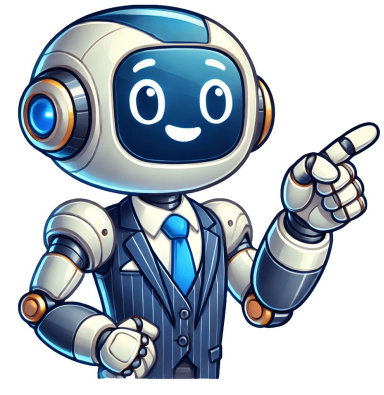


I'm not a bot

























Roof is one of the essential components which protects the house from heat, cold, rain, and snow. A roof rests on a structural frame made of concrete or MS steel. A concrete frame has columns and beams only; however, the steel frame is more complex in design and includes columns, trusses, beams, joists, and purlins. The concrete frame has a concrete roof or a deck slab. In contrast, the steel frame has roofing sheets over it. A roof sheet comes in different shapes and is made up of different materials. The use of roofing sheets is common in houses as well as commercial and industrial buildings. It is to be noted that the development of industries has led to extensive use of roofing sheets than concrete due to the following reasons: Easy installation, Easy availability, Durability, Low cost, Multiple options and Lesser construction time. As discussed earlier, roofing sheets are available for many purposes, i.e., residential, commercial, industrial, agricultural, etc. Each purpose requires roofing sheets to have specific properties, economy, and service span. Roofing sheets are available in various types of material to meet the demands of different industries. These materials have different characteristics, and almost all of them are easily available in the market. Corrugated Sheets Plain Sheets The corrugated sheets have a repetitive design across their width. The design consists of a series of ridges and valleys, which gives them a wavy appearance. This design helps in shedding water easily and prevents the sheets from getting clogged with debris. They are available in various materials like galvanized steel, aluminum, and plastic. The corrugated sheets are available in different lengths and widths, depending on the requirements of the project. Along their length. For this purpose, each sheet has an overlap section on one end and an underlap section on the opposite end. Hence, the system of sheets is strongly built and doesn't allow the water to leak through the joint. The corrugated design is used in most roofing systems because it is durable, strong, leakproof, and reliable. The common application of corrugated roofing sheets is for garages, porches, and sheds. The plain sheets are opposite to the corrugated sheets. These sheets have a linear cross-section in contrast to the corrugated sheets with alternate peaks and troughs. The plain sheets are difficult to join at the edges and need special care to make a leakproof joint. Metal Sheets Galvanized Sheets Plastic Sheets PVC Plastics Sheets Polycarbonate Sheets Asbestos Cement Sheets Color Coated Sheets Bitumen Sheets Rubber Sheets Metal sheets are available in steel, zinc, aluminum, and tin as base materials. These sheets are durable and last decades with due care and maintenance such as painting. The metal sheets have the advantage that their scrap value is the highest among the other roofing sheets. The recyclability of these sheets makes them an environmentally viable option. The long-term cost of metal sheets is comparable to others, considering the recycling option. Metal sheets have good fire resistance; however, they are prone to corrosion. The use of metal sheets is declining these days as the initial cost is higher than the other sheets. Galvanized iron sheets are similar to metal sheets, but the only difference is that they corrode less. GI sheets are made of carbon steel, and it contains a coating of zinc over them that is applied by a continuous hot dipping process. The zinc layer protects the sheet from corrosion. The GI sheets are available in a corrugated and plain design, and they can be further protected with paints. Moreover, the GI sheets are resistant to minor abrasion and/or mechanical damage. Plastic is a material made of chains of molecules called polymers. Plastic is a versatile material resistant to corrosion, strong, durable, and can be used in various applications. It is available in many forms, such as polycarbonate, polystyrene, and polyethylene. Plastic roofing sheets are available in different colors and finishes, making them a popular choice for residential and commercial buildings. They are easy to install, lightweight, and economical. The common usage of plastic roofing sheets is in large-scale industrial and commercial buildings. You can choose among the multiple thickness options available. Another benefit of using a polycarbonate roofing sheet is its weather resistance and durability. These sheets are unaffected by rain or snow, and thus, the maintenance cost is very low. Also, polycarbonate sheets are good insulators of heat and are also available in transparent and translucent sheets with multiple color options. They also filter harmful UV rays from the sunlight. Asbestos cement sheet or AC sheet comprises 8% chrysotile fibers mixed with cement mixture. These sheets are corrugated, and at the time of manufacturing, they can also be molded into any desired shape and size. The thickness of an AC sheet is approx 5.8 mm. AC sheets require zero maintenance as they are highly durable. Also, they are easy-to-install, strong, and durable roofing materials for warehouses, factories, low-cost housing, and practically any structure needing a roof. Another advantage of AC sheets is fire resistance. These sheets are very cheap. However, the fiber released into the air with them may cause air-borne diseases. You might have noticed these on the warehouse or garage roof. Color-coated sheets are available in various colors, and you can choose the color of your choice. Aluminum is the most common material used for color-coated sheets, and they are fire-resistant. The bitumen sheets are available in corrugated as well as in plain design. As the name suggests, these roofing sheets are made of bitumen mixed with fiber. They are durable and have a distinctive black appearance. The main advantage of bitumen roof sheet is that it is resistant to corrosion and can shed water quickly. The main disadvantage is that it absorbs the sunlight's heat, which increases the temperature inside the building. Rubber sheets are used over the existing roofing to provide waterproofing and heat insulation. The ethylene propylene diene monomer (EPDM) rubber is used, which is applied over the surface and glued or taped. An EPDM of thickness 1.2 mm is the most reliable waterproofing than a PVC sheet. Read Type of Roof Tiles Types of Sheet Types of Color Coated Types of PVC Types of Rubber For More Updates like our Facebook Page and join our Telegram Channel. The sheets are available in different colors and finishes, making them a popular choice for residential and commercial buildings. They are easy to install, lightweight, and economical. The common usage of plastic roofing sheets is in large-scale industrial and commercial buildings. You can choose among the multiple thickness options available. Another benefit of using a polycarbonate roofing sheet is its weather resistance and durability. These sheets are unaffected by rain or snow, and thus, the maintenance cost is very low. Also, polycarbonate sheets are good insulators of heat and are also available in transparent and translucent sheets with multiple color options. They also filter harmful UV rays from the sunlight. Asbestos cement sheet or AC sheet comprises 8% chrysotile fibers mixed with cement mixture. These sheets are corrugated, and at the time of manufacturing, they can also be molded into any desired shape and size. The thickness of an AC sheet is approx 5.8 mm. AC sheets require zero maintenance as they are highly durable. Also, they are easy-to-install, strong, and durable roofing materials for warehouses, factories, low-cost housing, and practically any structure needing a roof. Another advantage of AC sheets is fire resistance. These sheets are very cheap. However, the fiber released into the air with them may cause air-borne diseases. You might have noticed these on the warehouse or garage roof. Color-coated sheets are available in various colors, and you can choose the color of your choice. Aluminum is the most common material used for color-coated sheets, and they are fire-resistant. The bitumen sheets are available in corrugated as well as in plain design. As the name suggests, these roofing sheets are made of bitumen mixed with fiber. They are durable and have a distinctive black appearance. The main advantage of bitumen roof sheet is that it is resistant to corrosion and can shed water quickly. The main disadvantage is that it absorbs the sunlight's heat, which increases the temperature inside the building. Rubber sheets are used over the existing roofing to provide waterproofing and heat insulation. The ethylene propylene diene monomer (EPDM) rubber is used, which is applied over the surface and glued or taped. An EPDM of thickness 1.2 mm is the most reliable waterproofing than a PVC sheet. Read Type of Roof Tiles Types of Sheet Types of Color Coated Types of PVC Types of Rubber For More Updates like our Facebook Page and join our Telegram Channel. The sheets are available in different colors and finishes, making them a popular choice for residential and commercial buildings. They are easy to install, lightweight, and economical. The common usage of plastic roofing sheets is in large-scale industrial and commercial buildings. You can choose among the multiple thickness options available. Another benefit of using a polycarbonate roofing sheet is its weather resistance and durability. These sheets are unaffected by rain or snow, and thus, the maintenance cost is very low. Also, polycarbonate sheets are good insulators of heat and are also available in transparent and translucent sheets with multiple color options. They also filter harmful UV rays from the sunlight. Asbestos cement sheet or AC sheet comprises 8% chrysotile fibers mixed with cement mixture. These sheets are corrugated, and at the time of manufacturing, they can also be molded into any desired shape and size. The thickness of an AC sheet is approx 5.8 mm. AC sheets require zero maintenance as they are highly durable. Also, they are easy-to-install, strong, and durable roofing materials for warehouses, factories, low-cost housing, and practically any structure needing a roof. Another advantage of AC sheets is fire resistance. These sheets are very cheap. However, the fiber released into the air with them may cause air-borne diseases. You might have noticed these on the warehouse or garage roof. Color-coated sheets are available in various colors, and you can choose the color of your choice. Aluminum is the most common material used for color-coated sheets, and they are fire-resistant. The bitumen sheets are available in corrugated as well as in plain design. As the name suggests, these roofing sheets are made of bitumen mixed with fiber. They are durable and have a distinctive black appearance. The main advantage of bitumen roof sheet is that it is resistant to corrosion and can shed water quickly. The main disadvantage is that it absorbs the sunlight's heat, which increases the temperature inside the building. Rubber sheets are used over the existing roofing to provide waterproofing and heat insulation. The ethylene propylene diene monomer (EPDM) rubber is used, which is applied over the surface and glued or taped. An EPDM of thickness 1.2 mm is the most reliable waterproofing than a PVC sheet. Read Type of Roof Tiles Types of Sheet Types of Color Coated Types of PVC Types of Rubber For More Updates like our Facebook Page and join our Telegram Channel. The sheets are available in different colors and finishes, making them a popular choice for residential and commercial buildings. They are easy to install, lightweight, and economical. The common usage of plastic roofing sheets is in large-scale industrial and commercial buildings. You can choose among the multiple thickness options available. Another benefit of using a polycarbonate roofing sheet is its weather resistance and durability. These sheets are unaffected by rain or snow, and thus, the maintenance cost is very low. Also, polycarbonate sheets are good insulators of heat and are also available in transparent and translucent sheets with multiple color options. They also filter harmful UV rays from the sunlight. Asbestos cement sheet or AC sheet comprises 8% chrysotile fibers mixed with cement mixture. These sheets are corrugated, and at the time of manufacturing, they can also be molded into any desired shape and size. The thickness of an AC sheet is approx 5.8 mm. AC sheets require zero maintenance as they are highly durable. Also, they are easy-to-install, strong, and durable roofing materials for warehouses, factories, low-cost housing, and practically any structure needing a roof. Another advantage of AC sheets is fire resistance. These sheets are very cheap. However, the fiber released into the air with them may cause air-borne diseases. You might have noticed these on the warehouse or garage roof. Color-coated sheets are available in various colors, and you can choose the color of your choice. Aluminum is the most common material used for color-coated sheets, and they are fire-resistant. The bitumen sheets are available in corrugated as well as in plain design. As the name suggests, these roofing sheets are made of bitumen mixed with fiber. They are durable and have a distinctive black appearance. The main advantage of bitumen roof sheet is that it is resistant to corrosion and can shed water quickly. The main disadvantage is that it absorbs the sunlight's heat, which increases the temperature inside the building. Rubber sheets are used over the existing roofing to provide waterproofing and heat insulation. The ethylene propylene diene monomer (EPDM) rubber is used, which is applied over the surface and glued or taped. An EPDM of thickness 1.2 mm is the most reliable waterproofing than a PVC sheet. Read Type of Roof Tiles Types of Sheet Types of Color Coated Types of PVC Types of Rubber For More Updates like our Facebook Page and join our Telegram Channel. The sheets are available in different colors and finishes, making them a popular choice for residential and commercial buildings. They are easy to install, lightweight, and economical. The common usage of plastic roofing sheets is in large-scale industrial and commercial buildings. You can choose among the multiple thickness options available. Another benefit of using a polycarbonate roofing sheet is its weather resistance and durability. These sheets are unaffected by rain or snow, and thus, the maintenance cost is very low. Also, polycarbonate sheets are good insulators of heat and are also available in transparent and translucent sheets with multiple color options. They also filter harmful UV rays from the sunlight. Asbestos cement sheet or AC sheet comprises 8% chrysotile fibers mixed with cement mixture. These sheets are corrugated, and at the time of manufacturing, they can also be molded into any desired shape and size. The thickness of an AC sheet is approx 5.8 mm. AC sheets require zero maintenance as they are highly durable. Also, they are easy-to-install, strong, and durable roofing materials for warehouses, factories, low-cost housing, and practically any structure needing a roof. Another advantage of AC sheets is fire resistance. These sheets are very cheap. However, the fiber released into the air with them may cause air-borne diseases. You might have noticed these on the warehouse or garage roof. Color-coated sheets are available in various colors, and you can choose the color of your choice. Aluminum is the most common material used for color-coated sheets, and they are fire-resistant. The bitumen sheets are available in corrugated as well as in plain design. As the name suggests, these roofing sheets are made of bitumen mixed with fiber. They are durable and have a distinctive black appearance. The main advantage of bitumen roof sheet is that it is resistant to corrosion and can shed water quickly. The main disadvantage is that it absorbs the sunlight's heat, which increases the temperature inside the building. Rubber sheets are used over the existing roofing to provide waterproofing and heat insulation. The ethylene propylene diene monomer (EPDM) rubber is used, which is applied over the surface and glued or taped. An EPDM of thickness 1.2 mm is the most reliable waterproofing than a PVC sheet. Read Type of Roof Tiles Types of Sheet Types of Color Coated Types of PVC Types of Rubber For More Updates like our Facebook Page and join our Telegram Channel. The sheets are available in different colors and finishes, making them a popular choice for residential and commercial buildings. They are easy to install, lightweight, and economical. The common usage of plastic roofing sheets is in large-scale industrial and commercial buildings. You can choose among the multiple thickness options available. Another benefit of using a polycarbonate roofing sheet is its weather resistance and durability. These sheets are unaffected by rain or snow, and thus, the maintenance cost is very low. Also, polycarbonate sheets are good insulators of heat and are also available in transparent and translucent sheets with multiple color options. They also filter harmful UV rays from the sunlight. Asbestos cement sheet or AC sheet comprises 8% chrysotile fibers mixed with cement mixture. These sheets are corrugated, and at the time of manufacturing, they can also be molded into any desired shape and size. The thickness of an AC sheet is approx 5.8 mm. AC sheets require zero maintenance as they are highly durable. Also, they are easy-to-install, strong, and durable roofing materials for warehouses, factories, low-cost housing, and practically any structure needing a roof. Another advantage of AC sheets is fire resistance. These sheets are very cheap. However, the fiber released into the air with them may cause air-borne diseases. You might have noticed these on the warehouse or garage roof. Color-coated sheets are available in various colors, and you can choose the color of your choice. Aluminum is the most common material used for color-coated sheets, and they are fire-resistant. The bitumen sheets are available in corrugated as well as in plain design. As the name suggests, these roofing sheets are made of bitumen mixed with fiber. They are durable and have a distinctive black appearance. The main advantage of bitumen roof sheet is that it is resistant to corrosion and can shed water quickly. The main disadvantage is that it absorbs the sunlight's heat, which increases the temperature inside the building. Rubber sheets are used over the existing roofing to provide waterproofing and heat insulation. The ethylene propylene diene monomer (EPDM) rubber is used, which is applied over the surface and glued or taped. An EPDM of thickness 1.2 mm is the most reliable waterproofing than a PVC sheet. Read Type of Roof Tiles Types of Sheet Types of Color Coated Types of PVC Types of Rubber For More Updates like our Facebook Page and join our Telegram Channel. The sheets are available in different colors and finishes, making them a popular choice for residential and commercial buildings. They are easy to install, lightweight, and economical. The common usage of plastic roofing sheets is in large-scale industrial and commercial buildings. You can choose among the multiple thickness options available. Another benefit of using a polycarbonate roofing sheet is its weather resistance and durability. These sheets are unaffected by rain or snow, and thus, the maintenance cost is very low. Also, polycarbonate sheets are good insulators of heat and are also available in transparent and translucent sheets with multiple color options. They also filter harmful UV rays from the sunlight. Asbestos cement sheet or AC sheet comprises 8% chrysotile fibers mixed with cement mixture. These sheets are corrugated, and at the time of manufacturing, they can also be molded into any desired shape and size. The thickness of an AC sheet is approx 5.8 mm. AC sheets require zero maintenance as they are highly durable. Also, they are easy-to-install, strong, and durable roofing materials for warehouses, factories, low-cost housing, and practically any structure needing a roof. Another advantage of AC sheets is fire resistance. These sheets are very cheap. However, the fiber released into the air with them may cause air-borne diseases. You might have noticed these on the warehouse or garage roof. Color-coated sheets are available in various colors, and you can choose the color of your choice. Aluminum is the most common material used for color-coated sheets, and they are fire-resistant. The

The best type of sheet for roofing is polyvinyl chloride (PVC) due to its durability, resistance to weather and chemicals, and low maintenance costs. What is the most common type of sheet metal roofing? The most common type of sheet metal roofing is Galvanized Steel. Which roofing sheet is heat resistant? Polycarbonate roofing sheets are heat resistant. What are the advantages and disadvantages of various roof sheet materials? Advantages and disadvantages of various roof sheet materials include diverse durability, weather resistance, and price points, making some options more suitable for given climates and budgets. How do I choose the right roof sheet for my specific climate and environment? To choose the right roof sheet for your specific climate and environment, consider factors such as local weather patterns, sun exposure, material durability, and insulation requirements. What is the average lifespan and maintenance requirements for different types of roof sheets? The average lifespan and maintenance requirements for different types of roof sheets are: CGI sheet (10-15 years, low maintenance), polycarbonate (10-20 years, low maintenance), fiber cement (20-30 years, moderate maintenance), and PVC (10-20 years, low maintenance).