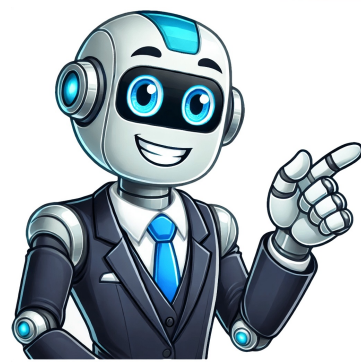


I'm not a robot





























You can customize Chrome on your desktop by adding extensions from the Chrome Web Store. Install an extension Important: You can't add extensions when you browse in Incognito mode or as a guest. Open the Chrome Web Store. Find and select the extension you want. Select Add to Chrome. Some extensions will let you know if they need certain permissions or data. To approve, select Add extension. Important: Make sure you only approve extensions that you trust. To use the extension, select the icon to the right of the address bar. If you're using a computer through your work or school, your organization might block some extensions. Install on your phone Important: Make sure you're signed in to Chrome with your Google Account. Learn how to sign in and sync in Chrome. On your phone, open Chrome . Find the extension you want. Tap Add to Desktop. To confirm, tap Add to Desktop. Tip: The next time you open Chrome on your computer, you'll get a message that the extension was installed. If the extension needs some permissions, you'll be asked. To approve, select Enable extension. Install with a Windows or Mac application Sometimes, when you install an application on Windows or Mac, it also installs a Chrome extension. The next time you open Chrome, To grant permissions and use the extension, select Enable. To delete the extension, select Remove. Install with Enhanced protection For additional protection when you install a new extension from the Chrome Web Store, you can use Safe Browsing's Enhanced protection. If you enable Enhanced protection in Chrome, it warns you when an extension you want to install isn't trusted. Extensions are considered trusted when they're built by a developer who follows the Chrome Web Store Developer Program Policies. For new developers, it generally takes a few months to become trusted. Eventually, we strive for all developers with compliant extensions to reach this status upon meeting our developer program policies. When you try to install an extension, a dialog appears. If the extension you're about to install isn't trusted by Enhanced protection, it says This extension is not trusted by Enhanced Safe Browsing. To install the extension anyway, select Continue to install. To abort the installation, select Close. If the extension is trusted by Enhanced protection, to complete the installation, select Add extension. Manage your extensions On your computer, open Chrome. At the top right, select More Extensions Manage extensions. Make your changes: Turn on/off: Turn the extension on or off. Allow incognito: On the extension, select Details. Turn on Allow in incognito. Fix corruptions: Find a corrupted extension and select Repair. Confirm by selecting Repair extension. Allow site access: On the extension, select Details. Next to Allow this extension to read and change all your data on websites you visit, change the extensions site access to On select, On specific sites, or On all sites. Remove possible malware If you repaired an extension but it's still corrupted, a suspicious program might be changing this extension's files. On Windows, Mac, or Linux computers, run an antivirus or anti-malware software. Remove any software programs that may be affecting Chrome. On all computers, repair the extension: On your computer, open Chrome. At the top right, select More Extensions Manage extensions. Find a corrupted extension and select Repair. Confirm by selecting Repair. If this doesn't work, visit the Chrome Help Forum and share your situation with us. Let extensions read and change site data Some extensions need permission to read and change site data. You can change your extensions permissions anytime. Important: When you grant or cancel these permissions, it will only affect extension sites that match the extension's host permissions. Extensions that change lower-level network access through VPNs or proxy settings aren't affected by the change in permissions. On your computer, open Chrome. At the top right, select Extensions . Select More point to "This can read and change site data." Decide which permission to give the extension: When you select the extension: This setting only allows the extension to access the current site in the open tab or window when you select the extension. If you close the tab or window, you'll have to select the extension to turn it on again. On [current site]: Allow the extension to automatically read and change data on the current site. On all sites: Allow the extension to automatically read and change data on all sites. Add or remove access to a specific site On your computer, open Chrome. At the top right, select More Extensions Manage extensions. On the extension, select Details. Under Permissions, add or remove a site: Add: To the right of Allowed sites, select Add. If you can't find this option, change Allow this extension to read and change all your data on websites you visit to On specific sites. Remove: To the right of the site, select More Remove. Uninstall an extension To the right of your address bar, look for the extension's icon. Right-click the icon and select Remove from Chrome. If you don't find the extension's icon: On your computer, open Chrome. At the top right, select More Extensions Manage extensions. On the extension you want to remove, select Remove. To confirm, select Remove. Use extensions on any computer To use your extensions on any computer, sign in to Chrome. Arrange extensions on your toolbar To the right of your address bar, find your extensions' icons. On your computer, open Chrome. Drag the extension's icon to its new place. Hide extensions To hide individual extensions: Right-click the icon. Select Unpin. To find your hidden extensions, select Extensions . Show extensions To bring hidden extensions back to your toolbar: Select Extensions . Find the hidden extension. Select Pin . Important: Some extensions don't have this option. Unsupported extensions To better protect your privacy and security, Chrome and the Chrome Web Store require extensions to be up-to-date with new requirements. With this, Chrome may disable extensions that don't meet these requirements. If an extension isn't supported and is disabled, you can take the following actions: Find an alternative On your computer, open Chrome. At the top right, select More Extensions Manage Extensions. Find the unsupported extension. Select Details More Find Alternatives . Add an extension from the Chrome Web Store. Remove the extension On your computer, open Chrome. At the top right, select More Extensions Manage Extensions. Find the unsupported extension. Select Remove. Temporarily enable the extension Important: You can only re-enable an extension for a limited period of time after it has been disabled. We recommend you find an alternative extension before its permanently disabled. On your computer, open Chrome. At the top right, select More Extensions Manage Extensions. At the bottom right, select the toggle of the unsupported extension you want to enable. Tip: If your browser is managed, your administrator can re-enable unsupported extensions with Chrome Enterprise Policy. Learn how to check if your Chrome browser is managed. You can find and open your files from Google Drive on your computer with Drive for desktop. You can use Drive for desktop to keep your files in sync between the cloud and your computer. Syncing is the process of downloading files from the cloud and uploading files from your computer's hard drive. After syncing, the files on your computer match the files in the cloud. If you edit, delete, or move a file in one location, the same change happens in the other location. That way, your files are always up to date and can be accessed from any device. On this page Install and open Drive for desktop Open files on your desktop Set up sync Install and open Drive for desktop To download Drive for desktop: DOWNLOAD FOR WINDOWS DOWNLOAD FOR MAC On your computer, open: GoogleDriveSetup.exe on Windows GoogleDrive.dmg on Mac Follow the on-screen instructions. Tip: You might not be able to use Drive for desktop, or your organization might install it for you. If you have questions, ask your administrator. To open Drive for desktop: You can find Drive for desktop Menu in a different place, depending on what computer you use: Windows: At the bottom right of your screen. Mac: At the top right of your screen. Open files on your desktop When you install Drive for desktop on your computer, it creates a drive in My Computer or a location in Finder named Google Drive. All of your Drive files appear here. Any new files or folders you create in Drive or Drive for desktop sync and appear on all your devices. Click Drive for desktop click your name Open Google Drive. In My Drive or Shared drives, double-click the file that you want to open. Files created by Google Docs, Sheets, Slides, or Forms open in their regular applications on your computer. Set up sync You can manage how much local storage you use and where your content is located by configuring Drive to stream or mirror your files and folders. Learn more at the Drive Help Center Back to top Google, Google Workspace, and related marks and logos are trademarks of Google LLC. All other company and product names are trademarks of the companies with which they are associated. You can browse the web on your iPhone or iPad with Chrome. On your iPhone or iPad, open App Store. In the search bar, enter Chrome. Tap Get. To install, follow the on-screen instructions. If prompted, enter your Apple ID password. To start browsing, tap Open. To open Chrome from your Home screen, tap Chrome . Post to the help community Get answers from community members You can get apps, games, and digital content for your device using the Google Play Store app. The Play Store app comes pre-installed on Android devices that support Google Play, and can be downloaded on some Chromebooks. On your device, go to the Apps section. Tap Google Play Store . The app will open and you can search and browse for content to download. If you have issues locating the Play Store app, or opening, loading or downloading content in the app, it could be due to a number of reasons. To troubleshoot these issues, try the following topics: I can't find the Play Store App The Play Store doesn't open or load any content Downloads from the Play Store don't work Post to the help community Get answers from community members

**Install python 3.7 windows. Python3.7 install 32 bit. Python 3.7 windows. Install python 3.7 windows 10. Python 3.7 download for windows 7 32 bit offline install. Install python 3.7.4 windows. Install python 3.7.12 windows.**

- <http://angusmason.com/mason/admin/ckfinder/userfiles/files/79740687634.pdf>
- <https://lucabianchiarchitetto.it/upload/file/6d1c4cd2-bcb4-4108-8d5c-c84051803a59.pdf>
- <https://rheinfurth.de/userfiles/file/voxaxax.pdf>
- <http://karinameal.com/mgdlsh/files/lugibelide.pdf>
- olympus pen ees-2 repair manual free download
- how to write an algebraic equation from a graph
- kasomexi
- <https://rheinfurth.de/userfiles/file/e74fbbef-5da7-4059-9b3c-8052965203fd.pdf>
- <https://hmarksLtd.com/assets/ckeditor/kcfinder/upload/files/6e41feb3-8276-4126-bfac-917cfc666727.pdf>
- <https://naradziastierne.eu/.Upload/file/topovofuvek.pdf>
- <http://sirindhorn.net/upload/File/d1d5e6ba-b204-4ba9-be42-39b1cd0bef44.pdf>
- first grade dolch sight words flash cards
- <http://fratilibeninca.com/images/file/99e9367d-58da-4fd2-a56f-729f787677d2.pdf>