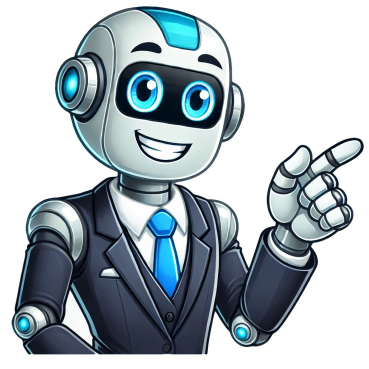


I'm not a robot





































Employee ID numbers play a crucial role in maintaining organized records within an organization. These unique identifiers are essential for tracking work hours, processing payroll and managing employee information efficiently. Knowing how to locate your Employee ID can save time and streamline communication with HR departments. Checking Pay Stubs One of the easiest ways to find your Employee ID is by reviewing your pay stub. These documents, which detail your earnings and deductions, typically include your Employee ID in the header or near other personal information. Pay stubs are reliable since they are generated regularly and provide a comprehensive overview of your financial transactions with the company. When reviewing your pay stub, look at the top section where personal details such as your name, address, and Employee ID are often listed. The format and placement of the ID may vary depending on the payroll software your employer uses but remain consistent within the organization. For employees with electronic pay stubs, accessing them through the company's payroll portal, such as ADP or Paychex, is another convenient option. Reviewing W-2 and Tax Forms W-2 forms, issued by employers at the end of each tax year, summarize annual earnings and taxes withheld. These forms are essential for filing income taxes and often include your Employee ID number. If you have multiple jobs, ensure you check all W-2s to avoid confusion. Payroll Portals Many organizations provide an online payroll portal where employees can access their pay history and related documents. Log in using your credentials, and navigate to sections like "My Information" or "Payroll History." Your Employee ID is often prominently displayed on these pages. HR Departments HR departments maintain detailed employee records, including unique identifiers, and can explain how IDs are used within the organization. These identifiers may be used for internal communications, resource access, or performance tracking. Payroll departments, which handle salary disbursements and benefits administration, also manage Employee IDs. They can assist with resolving discrepancies in your records and explain how IDs are generated and maintained in the payroll system. If your company undergoes changes like mergers or transitions to new payroll systems, these departments can provide guidance on how such changes might affect your Employee ID. Many human resources and payroll departments use employee ID numbers to keep track of employee records. The number can be required when you apply for a loan or credit or file your taxes. Without further ado, let's deep dive into this article to learn everything you need to know about employer & employee ID numbers, including where to find yours on your check stub. What Is an Employee ID Number? An employee ID number is a number or code that a company assigns to its employees, serving as a unique reference. This number is primarily used for in-house monitoring and management. The design, size, and layout of these identifiers can differ significantly based on the company's specific requirements and choices. Your employer's payroll department will use your employee ID number to track your wages and earnings. If you have more than one job, your employer will use this number to ensure you are paid the correct amount. It is also used to direct deposit your paycheck into your bank account. When you start a new job, your employer will ask you for your Social Security number. Your employer will use this number to report your wages and earnings to the IRS. The health insurance benefits you receive from your employer are also based on this number. So, you should be aware of the differences between SSN and Employee ID Number. How to Find Employee ID Number? The location of your Employee ID Number varies depending on your employer's practices and the way that they use technology. Here are some typical places you might find your Employee Identification Number: Paystub: Your Employee ID might be printed on your check stub, usually located at the top or bottom. Employee Badge or ID Card: If your company issues ID badges or cards, your Employee ID might be printed on it. HR or Payroll Portal: If your company has an online portal for HR or payroll-related subjects, you may discover your Employee ID after logging in. HR Documents: Onboarding or orientation materials may assist you with exploring your Employee ID. Ask HR or Your Supervisor: The simplest way can be to ask your HR or PO department. They should be able to provide you with your Employee ID or tell you where to locate it. Company Directory: Some companies have directories that list employees along with their ID numbers. What Is an Employer Identification Number? An employer identification number is a unique nine-digit number issued to a company organization. Employer identification number (EIN) is a unique identifier provided to a corporate organization so that the Internal Revenue Service may readily identify it (IRS). EINs make it easier for the IRS to identify firms for tax reporting. If you have workers, operate as a company or partnership, submit certain tax returns, or withhold taxes on income other than wages, you must obtain an EIN. Before they may begin operations, all firms that satisfy specific conditions must get an EIN. It enables businesses to create bank accounts and seek credit in addition to tax reporting. It is free to apply, and applications are accessible on the IRS website. How to Find Federal Employer Identification Number? Look on one of your pay stubs from the current tax year for your federal employer identification number. The EIN is a nine-digit number that looks like this: 12-3456789 (XX-XXXXXXX). Your employer is not legally compelled to publish its EIN on pay stubs for security reasons, but it is the usual practice and the most convenient place to check. Please inquire with your employer's human resources department for its EIN. Depending on the organization's size, you may be required to identify yourself using your SSN before the EIN is released. Look for your employer's contact information in box "b" on your W-2. The EIN will be formatted as 12-3456789. Does the check stub have my employer's EIN? It is determined by the pay stub format used by your firm. I've never seen anything like that on my pay stubs. Remember that the law varies from state to state. My firm typically adheres to the New York rule: company name, real address (not a PO Box), and primary phone number. According to New York law, a payee must know the exact entity paying them and have a legitimate mechanism to contact that organization, not merely some third party "authorized to accept questions." You can include more information like division or department, but I don't believe any state demands that level of detail. Difference Between Employer ID Number And Employee ID Number The employer identification number (EIN) is a nine-digit number assigned by the Internal Revenue Service (IRS) to business entities operating in the United States for identification. The federal taxes that businesses must pay are based on this number. Federal employer identification number (FEIN) is also used interchangeably with EIN. An employee identification number is a number or code assigned randomly by your company as a unique identifier. This number is utilized for internal oversight and administration in the company. Final Thoughts on Employee ID on Paystub Now that you know everything there is to know about employee ID numbers don't let yourself be caught off guard the next time you see one on your employee pay stub. Be sure to ask your employer if you have any questions, and stay up-to-date on payroll and tax statements to be as prepared as possible come tax season. The employee ID number is usually at the top of your pay stub next to your name. It's not like a security number, so there is no risk of fraud if it gets into the wrong hands. But remember that this is one of the most critical numbers your employer uses to identify you, so treat it with care. FAQs Do all paystubs have an employee ID number? In any workspace, it is necessary to have some way of identifying employees. This can be done in several ways, but one common method is to assign each employee a unique identifier, typically called an employee ID number. This number appears on most paystubs next to the employee's name. Is SSN and employee identification number the same? The SSN is not the employee identification number. An employee identification number is a unique number assigned to an employee by the employer. The SSN is a nine-digit number issued by the Social Security Administration. What if I need an employee ID number on my pay stub? If you do not have an employee ID number on your paystub, you may find it in your company's employee handbook or contact your HR department to get more information. How can I find my ADP ID? If you forget your login credentials, go to your ADP service login page and click the "Forgot Your User ID/Password?" link to obtain your user ID and reset your password. To secure your personal information, you will need to authenticate that you are the legitimate account owner throughout this procedure. Home » Wiki » How To Find Employee ID On Adp Asked by: Mr. Dr. Lisa Bauer B.A. Last update: May 24, 2020 star rating: 4.8/5 (10 ratings) Enter Employee ID located on your paycheck or paystub under File (see screen shot below). Do not use the leading zeros. It should be a 6 digit number (blocked out on screen shot for security). Another source to find your Employee ID is in the Meritain card, listed as Member ID. How do I find my ADP account number? You can access your ratings and account numbers on the mobile app or on mycard.adp.com. How do I find my employee ID on my paystub? Look on one of your pay stubs from the employer in the current tax year. The EIN is a nine-digit number in the format 12-3456789. What is the Associate ID in ADP? Associate ID is a unique identifier assigned to each employee by ADP. It is used for internal tracking and reporting purposes. How do I find my ADP ID? If you forget your login credentials, go to your ADP service login page and click the "Forgot Your User ID/Password?" link to obtain your user ID and reset your password. To secure your personal information, you will need to authenticate that you are the legitimate account owner throughout this procedure. Employer and Employee ID Numbers (EINs) are crucial identifiers used in payroll and tax systems to distinguish individuals and businesses. In this comprehensive guide, we will delve into what these numbers entail, how to find them, and their significance on check stubs. What Is an Employee ID Number? An Employee ID Number, commonly referred to as an employee ID number or employee ID, is a distinctive numerical identifier allocated to each employee within a company. This unique code plays a crucial role in payroll processing, HR management, and maintaining comprehensive employee records. It serves as a fundamental component in systems integrated with payroll generators, ensuring accurate documentation and facilitating streamlined administrative processes. How to Find Employee ID Numbers? Finding your Employee ID Number typically involves the following steps: Check Your Pay Stub: Your Employee ID Number is often printed on your pay stub alongside other payroll details. HR or Payroll Department: Contact your company's HR or payroll department if you cannot locate your Employee ID Number on your pay stub. They can provide assistance in retrieving this information. Employee Portal or HR Software: Many organizations provide access to employee portals or HR software where employees can view and also update their personal information, including their Employee ID Number. Related Article: Understand DG Paystubs What is an Employer Identification Number (EIN)? An Employer Identification Number (EIN) is a unique nine-digit number assigned to a company by the Internal Revenue Service (IRS) for tax purposes. It is used to identify the company for tax reporting and is required for businesses with employees. The EIN is a unique identifier assigned within an organization, essential for HR management, payroll processing, and employee record-keeping. It typically appears on pay stubs, providing employees with a clear reference point for their earnings and deductions. On the other hand, businesses and entities operating in the United States are assigned an Employer Identification Number (EIN) by the IRS. This nine-digit identifier is pivotal for tax purposes, enabling businesses to report income, deductions, and other financial details accurately. Employers can find their EIN through official IRS correspondence, tax documents, or online services provided by the IRS. Understanding the distinction between Employee IDs and EINs is crucial for maintaining compliance with tax regulations and facilitating efficient business operations. Employees rely on their Employee IDs to access company benefits, track earnings, and ensure accurate tax filings. Employers, meanwhile, use their EINs to fulfill tax obligations, manage payroll effectively, and maintain regulatory compliance. By grasping the importance of these identification numbers, both employees and employers can streamline administrative processes, enhance financial transparency, and contribute to the overall efficiency of their respective roles within the organizational framework. This understanding not only helps smooth HR management and payroll operations but also ensures accurate reporting to regulatory bodies, fostering a robust foundation for sustainable business practices. Frequently asked Questions (FAQs) about Employee and Employer Identification Numbers (EINs) What is an Employee ID Number (EIN), and why is it important on my pay stub? An EIN is a unique nine-digit number assigned to a company by the Internal Revenue Service (IRS) for tax purposes. It is used to identify the company for tax reporting and is required for businesses with employees. The EIN is a unique identifier assigned within an organization, essential for HR management, payroll processing, and employee record-keeping. It typically appears on pay stubs, providing employees with a clear reference point for their earnings and deductions. On the other hand, businesses and entities operating in the United States are assigned an Employer Identification Number (EIN) by the IRS. This nine-digit identifier is pivotal for tax purposes, enabling businesses to report income, deductions, and other financial details accurately. Employers can find their EIN through official IRS correspondence, tax documents, or online services provided by the IRS. Understanding the distinction between Employee IDs and EINs is crucial for maintaining compliance with tax regulations and facilitating efficient business operations. Employees rely on their Employee IDs to access company benefits, track earnings, and ensure accurate tax filings. Employers, meanwhile, use their EINs to fulfill tax obligations, manage payroll effectively, and maintain regulatory compliance. By grasping the importance of these identification numbers, both employees and employers can streamline administrative processes, enhance financial transparency, and contribute to the overall efficiency of their respective roles within the organizational framework. This understanding not only helps smooth HR management and payroll operations but also ensures accurate reporting to regulatory bodies, fostering a robust foundation for sustainable business practices. Frequently asked Questions (FAQs) about Employee and Employer Identification Numbers (EINs) What is an Employee ID Number (EIN), and why is it important on my pay stub? An EIN is a unique nine-digit number assigned to a company by the Internal Revenue Service (IRS) for tax purposes. It is used to identify the company for tax reporting and is required for businesses with employees. The EIN is a unique identifier assigned within an organization, essential for HR management, payroll processing, and employee record-keeping. It typically appears on pay stubs, providing employees with a clear reference point for their earnings and deductions. On the other hand, businesses and entities operating in the United States are assigned an Employer Identification Number (EIN) by the IRS. This nine-digit identifier is pivotal for tax purposes, enabling businesses to report income, deductions, and other financial details accurately. Employers can find their EIN through official IRS correspondence, tax documents, or online services provided by the IRS. Understanding the distinction between Employee IDs and EINs is crucial for maintaining compliance with tax regulations and facilitating efficient business operations. Employees rely on their Employee IDs to access company benefits, track earnings, and ensure accurate tax filings. Employers, meanwhile, use their EINs to fulfill tax obligations, manage payroll effectively, and maintain regulatory compliance. By grasping the importance of these identification numbers, both employees and employers can streamline administrative processes, enhance financial transparency, and contribute to the overall efficiency of their respective roles within the organizational framework. This understanding not only helps smooth HR management and payroll operations but also ensures accurate reporting to regulatory bodies, fostering a robust foundation for sustainable business practices.