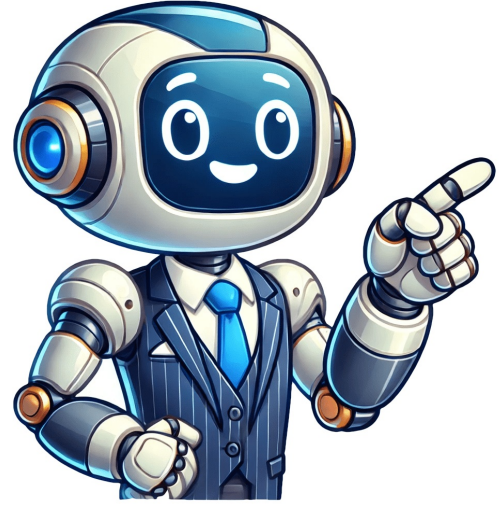


Continue



See below the built-in dishwasher (60cm) installation guide. Note: Do not use the manual document as a template, as scaling will not be accurate. If the installation template has been lost, to purchase a replacement click here. Dish Installation Template.PDFView the manual for the AEG FS24607Z here, for free. This manual comes under the category dishwashers and has been rated by 13 people with an average of a 8.1. This manual is available in the following languages: English. Do you have a question about the AEG FS24607Z or do you need help?Ask your question hereBelow you will find the product specifications and the manual specifications of the AEG FS24607Z. The AEG FS24607Z dishwasher is a full-size appliance that offers efficient and convenient cleaning for your dishes. With a capacity of 13 place settings, it can hold a large amount of dirty dishes, allowing you to clean them all in one cycle. Featuring a noise level of 46 dB, this dishwasher operates quietly, ensuring a peaceful environment in your kitchen. Its touch control panel makes it easy to operate, allowing you to select the desired settings with a simple touch. The AEG FS24607Z dishwasher is compatible with both cold and hot water fill, providing flexibility based on your preferences. It offers five different washing programs, allowing you to choose the most suitable one for your specific needs. Additionally, it includes a delayed start timer, which enables you to set a desired start time for the washing cycle, providing convenience and flexibility in your daily routine. With a cycle time of 240 minutes, this dishwasher ensures thorough cleaning of your dishes, eliminating any traces of dirt or food particles. The product size is 60 centimeters, making it a full-size dishwasher suitable for most kitchens. The cord length is 1.5 meters, providing ample reach for power connection. Overall, the AEG FS24607Z dishwasher offers reliable performance and durability, thanks to its high-quality construction and materials. By combining its large capacity, quiet operation, and various features, it provides an effective solution for your dish cleaning needs. Appliance placement Fully built-inNumber of place settings 13 place settingsBrandAEGModelFS24607Z | 911 535 221ProductdishwasherEAN7332543672844LanguageEnglishFileTypeUser manual (PDF), Datasheet (PDF), Energy label (PDF)Appliance placement Fully built-inProduct size Full size (60 cm)Custom panel-ready -Cord length 1.5 mBuilt-in display -Door colour WhiteControl type TouchWater fill Cold, HotControl panel colour BlackNumber of place settings 13 place settingsNoise level 46 dBNumber of washing programs 5Temperature (max) -CDelayed start timer YesCycle time 240 minDelay start (max) 9 hAquaStop function YesAquaSensor function YesDishwashing programs 90min 60C, Eco 45C, QuickNumber of temperature settings 2Drying system AirDryNoEmission class CWI-Fi controlled -Remaining time indication -Child lock -Adjustable feet YesFeet adjustment 8 mmCurrent 10 AAC input voltage 220 - 240 VWater consumption per cycle 9.9 LEnergy consumption per cycle - kWhEnergy efficiency class A to GAC input frequency 50 HzEnergy efficiency class EEnergy consumption per 100 cycles 94 kWhWidth 596 mmDepth 550 mmHeight 818 mmInstallation compartment width 600 mmInstallation compartment depth 550 mmInstallation compartment height (min) 820 mmInstallation compartment height (max) 880 mm show moreCan't find the answer to your question in the FAQs about the AEG FS24607Z below. The AEG FS24607Z has 5 washing programmes. This allows for versatile cleaning options and ensures that different types of dishes and levels of dirtiness can be appropriately addressed. Firstly, ensure that the dishwasher is properly plugged into a power source. Check if the power outlet is functioning by using another device. Additionally, ensure that the dishwasher door is fully closed and latched securely, as the dishwasher will not start if the door is not properly closed. Make sure that you are loading the dishes correctly and not overcrowding the dishwasher, as overcrowding can hinder proper water circulation. Check that the spray arms are not clogged or blocked by any debris. Also, ensure that the water temperature is hot enough for efficient cleaning, as cooler water may not dissolve detergent effectively. If you hear unusual noises, it is possible that objects, such as utensils or small items, are loose and rattling around in the dishwasher. Verify that all items are correctly placed in the racks and baskets, ensuring that they are not in contact with the spray arms or other moving parts. Additionally, check for any foreign objects in the dishwasher's filter or drain pump, as they may cause noise during operation. Frequent use of the dishwasher can potentially lead to a buildup of food particles and debris, resulting in unpleasant odours. Make sure you are regularly cleaning the dishwasher filter to prevent any accumulation. Additionally, check for any blockages in the drain hose or waste disposal that may contribute to odour. Consider using dishwasher cleaning agents specifically designed to eliminate foul smells. If the water is not draining properly, it could be because the drain hose is clogged or blocked. Check the hose for any obstructions and remove them if there are any. Make sure that the drain hose is positioned correctly and not bent, as this can hinder the water flow. Also, clean the dishwasher's filter to prevent any debris from blocking the drainage system. The AEG FS24607Z has 13 place settings. This means it can accommodate a large amount of dishes, which is great for families or those who entertain frequently. The AEG FS24607Z has a noise level of 46 dB. This noise level is considered low and will not disturb daily activities or conversations in the surrounding area. The AEG FS24607Z is a full-size dishwasher, measuring 60 cm in width. This size is standard for most dishwashers and will fit seamlessly into most kitchen layouts. Yes, the AEG FS24607Z has a delayed start timer. This feature allows the user to set a time for the dishwasher to start its cycle, which can be convenient for running the dishwasher during off-peak hours or when away from home. The AEG FS24607Z has a height of 818 mm. The AEG FS24607Z has a width of 596 mm. Each dishwasher has a separate compartment for softening salt. It opens when you turn the knob on the compartment. The softening salt can then be poured into the compartment by means of a funnel. In the case of a smelly dishwasher, you can take the following steps: - Clean the filters - Clean the spray arms - Clean the door rubbers - Run a hot wash program - Run an empty machine with a dishwasher cleanerThe AEG FS24607Z has energy label E. It is not recommended to rinse dirty dishes before placing them in the dishwasher. For the life cycle of the machine, it is better to put everything dirty in the dishwasher. The grease on the dirty dishes is the lubrication for the pump in the machine. The average amount used is about 25 grams of dishwashing detergent. It is recommended to follow the advice on the packaging. Yes, the manual of the AEG FS24607Z is available in English. Is your question not listed? Ask your question herePage 3View the manual for the AEG FS24607Z here, for free. This manual comes under the category dishwashers and has been rated by 13 people with an average of a 8.1. This manual is available in the following languages: English. Do you have a question about the AEG FS24607Z or do you need help?Ask your question hereBelow you will find the product specifications and the manual specifications of the AEG FS24607Z. The AEG FS24607Z dishwasher is a full-size appliance that offers efficient and convenient cleaning for your dishes. With a capacity of 13 place settings, it can hold a large amount of dirty dishes, allowing you to clean them all in one cycle. Featuring a noise level of 46 dB, this dishwasher operates quietly, ensuring a peaceful environment in your kitchen. Its touch control panel makes it easy to operate, allowing you to select the desired settings with a simple touch. The AEG FS24607Z dishwasher is compatible with both cold and hot water fill, providing flexibility based on your preferences. It offers five different washing programs, allowing you to choose the most suitable one for your specific needs. Additionally, it includes a delayed start timer, which enables you to set a desired start time for the washing cycle, providing convenience and flexibility in your daily routine. With a cycle time of 240 minutes, this dishwasher ensures thorough cleaning of your dishes, eliminating any traces of dirt or food particles. The product size is 60 centimeters, making it a full-size dishwasher suitable for most kitchens. The cord length is 1.5 meters, providing ample reach for power connection. Overall, the AEG FS24607Z dishwasher offers reliable performance and durability, thanks to its high-quality construction and materials. By combining its large capacity, quiet operation, and various features, it provides an effective solution for your dish cleaning needs. Appliance placement Fully built-inNumber of place settings 13 place settingsBrandAEGModelFS24607Z | 911 535 221ProductdishwasherEAN7332543672844LanguageEnglishFileTypeUser manual (PDF), Datasheet (PDF), Energy label (PDF)Appliance placement Fully built-inProduct size Full size (60 cm)Custom panel-ready -Cord length 1.5 mBuilt-in display -Door colour WhiteControl type TouchWater fill Cold, HotControl panel colour BlackNumber of place settings 13 place settingsNoise level 46 dBNumber of washing programs 5Temperature (max) -CDelayed start timer YesCycle time 240 minDelay start (max) 9 hAquaStop function YesAquaSensor function YesDishwashing programs 90min 60C, Eco 45C, QuickNumber of temperature settings 2Drying system AirDryNoEmission class CWI-Fi controlled -Remaining time indication -Child lock -Adjustable feet YesFeet adjustment 8 mmCurrent 10 AAC input voltage 220 - 240 VWater consumption per cycle 9.9 LEnergy consumption per cycle - kWhEnergy efficiency class A to GAC input frequency 50 HzEnergy efficiency class EEnergy consumption per 100 cycles 94 kWhWidth 596 mmDepth 550 mmHeight 818 mmInstallation compartment width 600 mmInstallation compartment depth 550 mmInstallation compartment height (min) 820 mmInstallation compartment height (max) 880 mm show moreCan't find the answer to your question in the FAQs about the AEG FS24607Z below. The AEG FS24607Z has 5 washing programmes. This allows for versatile cleaning options and ensures that different types of dishes and levels of dirtiness can be appropriately addressed. Firstly, ensure that the dishwasher is properly plugged into a power source. Check if the power outlet is functioning by using another device. Additionally, ensure that the dishwasher door is fully closed and latched securely, as the dishwasher will not start if the door is not properly closed. Make sure that you are loading the dishes correctly and not overcrowding the dishwasher, as overcrowding can hinder proper water circulation. Check that the spray arms are not clogged or blocked by any debris. Also, ensure that the water temperature is hot enough for efficient cleaning, as cooler water may not dissolve detergent effectively. If you hear unusual noises, it is possible that objects, such as utensils or small items, are loose and rattling around in the dishwasher. Verify that all items are correctly placed in the racks and baskets, ensuring that they are not in contact with the spray arms or other moving parts. Additionally, check for any foreign objects in the dishwasher's filter or drain pump, as they may cause noise during operation. Frequent use of the dishwasher can potentially lead to a buildup of food particles and debris, resulting in unpleasant odours. Make sure you are regularly cleaning the dishwasher filter to prevent any accumulation. Additionally, check for any blockages in the drain hose or waste disposal that may contribute to odour. Consider using dishwasher cleaning agents specifically designed to eliminate foul smells. If the water is not draining properly, it could be because the drain hose is clogged or blocked. Check the hose for any obstructions and remove them if there are any. Make sure that the drain hose is positioned correctly and not bent, as this can hinder the water flow. Also, clean the dishwasher's filter to prevent any debris from blocking the drainage system. The AEG FS24607Z has 13 place settings. This means it can accommodate a large amount of dishes, which is great for families or those who entertain frequently. The AEG FS24607Z has a noise level of 46 dB. This noise level is considered low and will not disturb daily activities or conversations in the surrounding area. The AEG FS24607Z is a full-size dishwasher, measuring 60 cm in width. This size is standard for most dishwashers and will fit seamlessly into most kitchen layouts. Yes, the AEG FS24607Z has a delayed start timer. This feature allows the user to set a time for the dishwasher to start its cycle, which can be convenient for running the dishwasher during off-peak hours or when away from home. The AEG FS24607Z has a height of 818 mm. The AEG FS24607Z has a width of 596 mm. Each dishwasher has a separate compartment for softening salt. It opens when you turn the knob on the compartment. The softening salt can then be poured into the compartment by means of a funnel. In the case of a smelly dishwasher, you can take the following steps: - Clean the filters - Clean the spray arms - Clean the door rubbers - Run a hot wash program - Run an empty machine with a dishwasher cleanerThe AEG FS24607Z has energy label E. It is not recommended to rinse dirty dishes before placing them in the dishwasher. For the life cycle of the machine, it is better to put everything dirty in the dishwasher. The grease on the dirty dishes is the lubrication for the pump in the machine. The average amount used is about 25 grams of dishwashing detergent. It is recommended to follow the advice on the packaging. Yes, the manual of the AEG FS24607Z is available in English. Is your question not listed? Ask your question herePage 4View the manual for the AEG FS24607Z here, for free. This manual comes under the category dishwashers and has been rated by 13 people with an average of a 8.1. This manual is available in the following languages: English. Do you have a question about the AEG FS24607Z or do you need help?Ask your question hereBelow you will find the product specifications and the manual specifications of the AEG FS24607Z. The AEG FS24607Z dishwasher is a full-size appliance that offers efficient and convenient cleaning for your dishes. With a capacity of 13 place settings, it can hold a large amount of dirty dishes, allowing you to clean them all in one cycle. Featuring a noise level of 46 dB, this dishwasher operates quietly, ensuring a peaceful environment in your kitchen. Its touch control panel makes it easy to operate, allowing you to select the desired settings with a simple touch. The AEG FS24607Z dishwasher is compatible with both cold and hot water fill, providing flexibility based on your preferences. It offers five different washing programs, allowing you to choose the most suitable one for your specific needs. Additionally, it includes a delayed start timer, which enables you to set a desired start time for the washing cycle, providing convenience and flexibility in your daily routine. With a cycle time of 240 minutes, this dishwasher ensures thorough cleaning of your dishes, eliminating any traces of dirt or food particles. The product size is 60 centimeters, making it a full-size dishwasher suitable for most kitchens. The cord length is 1.5 meters, providing ample reach for power connection. Overall, the AEG FS24607Z dishwasher offers reliable performance and durability, thanks to its high-quality construction and materials. By combining its large capacity, quiet operation, and various features, it provides an effective solution for your dish cleaning needs. Appliance placement Fully built-inNumber of place settings 13 place settingsBrandAEGModelFS24607Z | 911 535 221ProductdishwasherEAN7332543672844LanguageEnglishFileTypeUser manual (PDF), Datasheet (PDF), Energy label (PDF)Appliance placement Fully built-inProduct size Full size (60 cm)Custom panel-ready -Cord length 1.5 mBuilt-in display -Door colour WhiteControl type TouchWater fill Cold, HotControl panel colour BlackNumber of place settings 13 place settingsNoise level 46 dBNumber of washing programs 5Temperature (max) -CDelayed start timer YesCycle time 240 minDelay start (max) 9 hAquaStop function YesAquaSensor function YesDishwashing programs 90min 60C, Eco 45C, QuickNumber of temperature settings 2Drying system AirDryNoEmission class CWI-Fi controlled -Remaining time indication -Child lock -Adjustable feet YesFeet adjustment 8 mmCurrent 10 AAC input voltage 220 - 240 VWater consumption per cycle 9.9 LEnergy consumption per cycle - kWhEnergy efficiency class A to GAC input frequency 50 HzEnergy efficiency class EEnergy consumption per 100 cycles 94 kWhWidth 596 mmDepth 550 mmHeight 818 mmInstallation compartment width 600 mmInstallation compartment depth 550 mmInstallation compartment height (min) 820 mmInstallation compartment height (max) 880 mm show moreCan't find the answer to your question in the FAQs about the AEG FS24607Z below. The AEG FS24607Z has 5 washing programmes. This allows for versatile cleaning options and ensures that different types of dishes and levels of dirtiness can be appropriately addressed. Firstly, ensure that the dishwasher is properly plugged into a power source. Check if the power outlet is functioning by using

The spray arms - Clean the door rubbers - Run a hot wash program - Run an empty machine with a dishwasher cleanerThe AEG FSBA42607Z has energy label E.It is not recommended to rinse dirty dishes before placing them in the dishwasher. For the life cycle of the machine, it is better to put everything dirty in the dishwasher. The grease on the dirty dishes is the lubrication for the pump in the machine. The average amount used is about 25 grams of dishwashing detergent. It is recommended to follow the advice on the packaging. Yes, the manual of the AEG FSBA42607Z is available in English. Is your question not listed? Ask your question herePage 13View the manual for the AEG FSBA42607Z here, for free. This manual comes under the category dishwashers and has been rated by 13 people with an average of a 8.1. This manual is available in the following languages: English. Do you have a question about the AEG FSBA42607Z or do you need help?Ask your question hereBelow you will find the product specifications and the manual specifications of the AEG FSBA42607Z. The AEG FSBA42607Z dishwasher is a full-size appliance that offers efficient and convenient cleaning for your dishes. With a capacity of 13 place settings, it can hold a large amount of dirty dishes, allowing you to clean them all in one cycle. Featuring a noise level of 46 dB, this dishwasher operates quietly, ensuring a peaceful environment in your kitchen. Its touch control panel makes it easy to operate, allowing you to select the desired settings with a simple touch. The AEG FSBA42607Z dishwasher is compatible with both cold and hot water fill, providing flexibility based on your preferences. It offers five different washing programs, allowing you to choose the most suitable one for your specific needs. Additionally, it includes a delayed start timer, which enables you to set a desired start time for the washing cycle, providing convenience and flexibility in your daily routine. With a cycle time of 240 minutes, this dishwasher ensures thorough cleaning of your dishes, eliminating any traces of dirt or food particles. The product size is 60 centimeters, making it a full-size dishwasher suitable for most kitchens. The cord length is 1.5 meters, providing ample reach for power connection. Overall, the AEG FSBA42607Z dishwasher offers reliable performance and durability, thanks to its high-quality construction and materials. By combining its large capacity, quiet operation, and various features, it provides an effective solution for your dish cleaning needs.Appliance placement Fully built-inNumber of place settings 13 place settingsBrandAEGModelFSBA42607Z [911 535 221ProductdishwasherEAN7332543672844LanguageEnglishFileTypeUser manual (PDF), Datasheet (PDF), Energy label (PDF)Appliance placement Fully built-inProduct size Full size (60 cm)Custom panel-ready -Cord length 1.5 mBuilt-in display -Door colour WhiteControl type TouchWater fill Cold, HotControl panel colour BlackNumber of place settings 13 place settingsNoise level 46 dBNumber of washing programs 5Temperature (max) -CDelayed start timer YesCycle time 240 minDelay start (max) 9 hAquaStop function YesAquaSensor function YesDishwashing programs 90min 60C, Eco 45C, QuickNumber of temperature settings 2Drying system AirDryNoise emission class CWi-Fi controlled -Remaining time indication -Child lock -Adjustable feet YesFeet adjustment 8 mmCurrent 10 AAC input voltage 220 - 240 VWater consumption per cycle 9.9 LEnergy consumption per cycle - kWhEnergy efficiency scale A to GAC input frequency 50 HzEnergy efficiency class EEnergy consumption per 100 cycles 94 kWhWidth 596 mmDepth 550 mmHeight 818 mmInstallation compartment width 600 mmInstallation compartment depth 550 mmInstallation compartment height (min) 820 mmInstallation compartment height (max) 880 mm show moreCan't find the answer to your question in the manual? You may find the answer to your question in the FAQs about the AEG FSBA42607Z below.The AEG FSBA42607Z has 5 washing programmes. This allows for versatile cleaning options and ensures that different types of dishes and levels of dirtiness can be appropriately addressed.Firstly, ensure that the dishwasher is properly plugged into a power source. Check if the power outlet is functioning by using another device. Additionally, ensure that the dishwasher door is fully closed and latched securely, as the dishwasher will not start if the door is not properly closed.Make sure that you are loading the dishes correctly and not overloading the dishwasher, as overcrowding can hinder proper water circulation. Check that the spray arms are not clogged or blocked by any debris. Also, ensure that the water temperature is hot enough for efficient cleaning, as cooler water may not dissolve detergent effectively.If you hear unusual noises, it is possible that objects, such as utensils or small items, are loose and rattling around in the dishwasher. Verify that all items are correctly placed in the racks and baskets, ensuring that they are not in contact with the spray arms or other moving parts. Additionally, check for any foreign objects in the dishwasher's filter or drain pump, as they may cause noise during operation.Frequent use of the dishwasher can potentially lead to a buildup of food particles and debris, resulting in unpleasant odours. Make sure you are regularly cleaning the dishwasher filter to prevent any accumulation. Additionally, check for any blockages in the drain hose or waste disposal that may contribute to odour. Consider using dishwasher cleaning agents specifically designed to eliminate foul smells.If the water is not draining properly, it could be because the drain hose is clogged or blocked. Check the hose for any obstructions and remove them if there are any. Make sure that the drain hose is positioned correctly and not bent, as this can hinder the water flow. Also, clean the dishwasher's filter to prevent any debris from blocking the drainage system.The AEG FSBA42607Z is a full-size dishwasher, measuring 60 cm in width. This size is standard for most dishwashers and will fit seamlessly into most kitchen layouts.Yes, the AEG FSBA42607Z has a delayed start timer. This feature allows the user to set a time for the dishwasher to start its cycle, which can be convenient for running the dishwasher during off-peak hours or when away from home.The AEG FSBA42607Z has a height of 818 mm.The AEG FSBA42607Z has a width of 596 mm.Each dishwasher has a separate compartment for softening salt. It opens when you turn the knob on the compartment. The softening salt can then be poured into the compartment by means of a funnel.In the case of a smelly dishwasher, you can take the following steps: - Clean the filters - Clean the spray arms - Clean the door rubbers - Run a hot wash program - Run an empty machine with a dishwasher cleanerThe AEG FSBA42607Z has energy label E.It is not recommended to rinse dirty dishes before placing them in the dishwasher. For the life cycle of the machine, it is better to put everything dirty in the dishwasher. The grease on the dirty dishes is the lubrication for the pump in the machine. The average amount used is about 25 grams of dishwashing detergent. It is recommended to follow the advice on the packaging. Yes, the manual of the AEG FSBA42607Z is available in English. Is your question not listed? Ask your question herePage 13View the manual for the AEG FSBA42607Z here, for free. This manual comes under the category dishwashers and has been rated by 13 people with an average of a 8.1. This manual is available in the following languages: English. Do you have a question about the AEG FSBA42607Z or do you need help?Ask your question hereBelow you will find the product specifications and the manual specifications of the AEG FSBA42607Z. The AEG FSBA42607Z dishwasher is a full-size appliance that offers efficient and convenient cleaning for your dishes. With a capacity of 13 place settings, it can hold a large amount of dirty dishes, allowing you to clean them all in one cycle. Featuring a noise level of 46 dB, this dishwasher operates quietly, ensuring a peaceful environment in your kitchen. Its touch control panel makes it easy to operate, allowing you to select the desired settings with a simple touch. The AEG FSBA42607Z dishwasher is compatible with both cold and hot water fill, providing flexibility based on your preferences. It offers five different washing programs, allowing you to choose the most suitable one for your specific needs. Additionally, it includes a delayed start timer, which enables you to set a desired start time for the washing cycle, providing convenience and flexibility in your daily routine. With a cycle time of 240 minutes, this dishwasher ensures thorough cleaning of your dishes, eliminating any traces of dirt or food particles. The product size is 60 centimeters, making it a full-size dishwasher suitable for most kitchens. The cord length is 1.5 meters, providing ample reach for power connection. Overall, the AEG FSBA42607Z dishwasher offers reliable performance and durability, thanks to its high-quality construction and materials. By combining its large capacity, quiet operation, and various features, it provides an effective solution for your dish cleaning needs.Appliance placement Fully built-inNumber of place settings 13 place settingsBrandAEGModelFSBA42607Z [911 535 221ProductdishwasherEAN7332543672844LanguageEnglishFileTypeUser manual (PDF), Datasheet (PDF), Energy label (PDF)Appliance placement Fully built-inProduct size Full size (60 cm)Custom panel-ready -Cord length 1.5 mBuilt-in display -Door colour WhiteControl type TouchWater fill Cold, HotControl panel colour BlackNumber of place settings 13 place settingsNoise level 46 dBNumber of washing programs 5Temperature (max) -CDelayed start timer YesCycle time 240 minDelay start (max) 9 hAquaStop function YesAquaSensor function YesDishwashing programs 90min 60C, Eco 45C, QuickNumber of temperature settings 2Drying system AirDryNoise emission class CWi-Fi controlled -Remaining time indication -Child lock -Adjustable feet YesFeet adjustment 8 mmCurrent 10 AAC input voltage 220 - 240 VWater consumption per cycle 9.9 LEnergy consumption per cycle - kWhEnergy efficiency scale A to GAC input frequency 50 HzEnergy efficiency class EEnergy consumption per 100 cycles 94 kWhWidth 596 mmDepth 550 mmHeight 818 mmInstallation compartment width 600 mmInstallation compartment depth 550 mmInstallation compartment height (min) 820 mmInstallation compartment height (max) 880 mm show moreCan't find the answer to your question in the manual? You may find the answer to your question in the FAQs about the AEG FSBA42607Z below.The AEG FSBA42607Z has 5 washing programmes. This allows for versatile cleaning options and ensures that different types of dishes and levels of dirtiness can be appropriately addressed.Firstly, ensure that the dishwasher is properly plugged into a power source. Check if the power outlet is functioning by using another device. Additionally, ensure that the dishwasher door is fully closed and latched securely, as the dishwasher will not start if the door is not properly closed.Make sure that you are loading the dishes correctly and not overloading the dishwasher, as overcrowding can hinder proper water circulation. Check that the spray arms are not clogged or blocked by any debris. Also, ensure that the water temperature is hot enough for efficient cleaning, as cooler water may not dissolve detergent effectively.If you hear unusual noises, it is possible that objects, such as utensils or small items, are loose and rattling around in the dishwasher. Verify that all items are correctly placed in the racks and baskets, ensuring that they are not in contact with the spray arms or other moving parts. Additionally, check for any foreign objects in the dishwasher's filter or drain pump, as they may cause noise during operation.Frequent use of the dishwasher can potentially lead to a buildup of food particles and debris, resulting in unpleasant odours. Make sure you are regularly cleaning the dishwasher filter to prevent any accumulation. Additionally, check for any blockages in the drain hose or waste disposal that may contribute to odour. Consider using dishwasher cleaning agents specifically designed to eliminate foul smells.If the water is not draining properly, it could be because the drain hose is clogged or blocked. Check the hose for any obstructions and remove them if there are any. Make sure that the drain hose is positioned correctly and not bent, as this can hinder the water flow. Also, clean the dishwasher's filter to prevent any debris from blocking the drainage system.The AEG FSBA42607Z is a full-size dishwasher, measuring 60 cm in width. This size is standard for most dishwashers and will fit seamlessly into most kitchen layouts.Yes, the AEG FSBA42607Z has a delayed start timer. This feature allows the user to set a time for the dishwasher to start its cycle, which can be convenient for running the dishwasher during off-peak hours or when away from home.The AEG FSBA42607Z has a height of 818 mm.The AEG FSBA42607Z has a width of 596 mm.Each dishwasher has a separate compartment for softening salt. It opens when you turn the knob on the compartment. The softening salt can then be poured into the compartment by means of a funnel.In the case of a smelly dishwasher, you can take the following steps: - Clean the filters - Clean the spray arms - Clean the door rubbers - Run a hot wash program - Run an empty machine with a dishwasher cleanerThe AEG FSBA42607Z has energy label E.It is not recommended to rinse dirty dishes before placing them in the dishwasher. For the life cycle of the machine, it is better to put everything dirty in the dishwasher. The grease on the dirty dishes is the lubrication for the pump in the machine. The average amount used is about 25 grams of dishwashing detergent. It is recommended to follow the advice on the packaging. Yes, the manual of the AEG FSBA42607Z is available in English. Is your question not listed? Ask your question herePage 13View the manual for the AEG FSBA42607Z here, for free. This manual comes under the category dishwashers and has been rated by 13 people with an average of a 8.1. This manual is available in the following languages: English. Do you have a question about the AEG FSBA42607Z or do you need help?Ask your question hereBelow you will find the product specifications and the manual specifications of the AEG FSBA42607Z. The AEG FSBA42607Z dishwasher is a full-size appliance that offers efficient and convenient cleaning for your dishes. With a capacity of 13 place settings, it can hold a large amount of dirty dishes, allowing you to clean them all in one cycle. Featuring a noise level of 46 dB, this dishwasher operates quietly, ensuring a peaceful environment in your kitchen. Its touch control panel makes it easy to operate, allowing you to select the desired settings with a simple touch. The AEG FSBA42607Z dishwasher is compatible with both cold and hot water fill, providing flexibility based on your preferences. It offers five different washing programs, allowing you to choose the most suitable one for your specific needs. Additionally, it includes a delayed start timer, which enables you to set a desired start time for the washing cycle, providing convenience and flexibility in your daily routine. With a cycle time of 240 minutes, this dishwasher ensures thorough cleaning of your dishes, eliminating any traces of dirt or food particles. The product size is 60 centimeters, making it a full-size dishwasher suitable for most kitchens. The cord length is 1.5 meters, providing ample reach for power connection. Overall, the AEG FSBA42607Z dishwasher offers reliable performance and durability, thanks to its high-quality construction and materials. By combining its large capacity, quiet operation, and various features, it provides an effective solution for your dish cleaning needs.Appliance placement Fully built-inNumber of place settings 13 place settingsBrandAEGModelFSBA42607Z [911 535 221ProductdishwasherEAN7332543672844LanguageEnglishFileTypeUser manual (PDF), Datasheet (PDF), Energy label (PDF)Appliance placement Fully built-inProduct size Full size (60 cm)Custom panel-ready -Cord length 1.5 mBuilt-in display -Door colour WhiteControl type TouchWater fill Cold, HotControl panel colour BlackNumber of place settings 13 place settingsNoise level 46 dBNumber of washing programs 5Temperature (max) -CDelayed start timer YesCycle time 240 minDelay start (max) 9 hAquaStop function YesAquaSensor function YesDishwashing programs 90min 60C, Eco 45C, QuickNumber of temperature settings 2Drying system AirDryNoise emission class CWi-Fi controlled -Remaining time indication -Child lock -Adjustable feet YesFeet adjustment 8 mmCurrent 10 AAC input voltage 220 - 240 VWater consumption per cycle 9.9 LEnergy consumption per cycle - kWhEnergy efficiency scale A to GAC input frequency 50 HzEnergy efficiency class EEnergy consumption per 100 cycles 94 kWhWidth 596 mmDepth 550 mmHeight 818 mmInstallation compartment width 600 mmInstallation compartment depth 550 mmInstallation compartment height (min) 820 mmInstallation compartment height (max) 880 mm show moreCan't find the answer to your question in the manual? You may find the answer to your question in the FAQs about the AEG FSBA42607Z below.The AEG FSBA42607Z has 5 washing programmes. This allows for versatile cleaning options and ensures that different types of dishes and levels of dirtiness can be appropriately addressed.Firstly, ensure that the dishwasher is properly plugged into a power source. Check if the power outlet is functioning by using another device. Additionally, ensure that the dishwasher door is fully closed and

HotControl panel colour BlackNumber of place settings 13 place settingsNoise level 46 dBNumber of washing programs 5Temperature (max) - CDelayed start timer YesCycle time 240 minDelay start (max) 9 hAquasTop function YesAquaSensor function YesDishwashing programs 90min 60C, Eco 45C, QuickNumber of temperature settings 2Drying system AirDryNoise emission class CWi-Fi controlled -Remaining time indication -Child lock -Adjustable feet YesFeet adjustment 8 mmCurrent 10 AAC input voltage 220 - 240 VWater consumption per cycle 9.9 LEnergy efficiency scale A to GAC input frequency 50 HzEnergy efficiency class EEnergy consumption per 100 cycles 94 kWhWidth 596 mmDepth 550 mmHeight 818 mmInstallation compartment width 600 mmInstallation compartment depth 550 mmInstallation compartment height (min) 820 mmInstallation compartment height (max) 880 mm show moreCan't find the answer to your question in the FAQs about the AEG FSB42607Z below.The AEG FSB42607Z has 5 washing programmes. This allows for versatile cleaning options and ensures that different types of dishes and levels of dirtiness can be appropriately addressed.Firstly, ensure that the dishwasher is properly plugged into a power source. Check if the power outlet is functioning by using another device. Additionally, ensure that the dishwasher door is fully closed and latched securely, as the dishwasher will not start if the door is not properly closed.Make sure that you are loading the dishes correctly and not overloading the dishwasher, as overcrowding can hinder proper water circulation. Check that the spray arms are not clogged or blocked by any debris. Also, ensure that the water temperature is hot enough for efficient cleaning, as cooler water may not dissolve detergent effectively.If you hear unusual noises, it is possible that objects, such as utensils or small items, are loose and rattling around in the dishwasher. Verify that all items are correctly placed in the racks and baskets, ensuring that they are not in contact with the spray arms or other moving parts. Additionally, check for any foreign objects in the dishwasher's filter or drain pump, as they may cause noise during operation.Frequent use of the dishwasher can potentially lead to a buildup of food particles and debris, resulting in unpleasant odours. Make sure you are regularly cleaning the dishwasher filter to prevent any accumulation. Additionally, check for any blockages in the drain hose or waste disposal that may contribute to odour. Consider using dishwasher cleaning agents specifically designed to eliminate foul smells.If the water is not draining properly, it could be because the drain hose is clogged or blocked. Check the hose for any obstructions and remove them if there are any. Make sure that the drain hose is positioned correctly and not bent, as this can hinder the water flow. Also, clean the dishwasher's filter to prevent any debris from blocking the drainage system.The AEG FSB42607Z has 13 place settings. This means it can accommodate a large amount of dishes, which is great for families or those who entertain frequently.The AEG FSB42607Z has a noise level of 46 dB. This noise level is considered low and will not disturb daily activities or conversations in the surrounding area.The AEG FSB42607Z is a full-size dishwasher, measuring 60 cm in width. This size is standard for most dishwashers and will fit seamlessly into most kitchen layouts.Yes, the AEG FSB42607Z has a delayed start timer. This feature allows the user to set a time for the dishwasher to start its cycle, which can be convenient for running the dishwasher during off-peak hours or when away from home.The AEG FSB42607Z has a height of 818 mm.The AEG FSB42607Z has a width of 596 mm.The AEG FSB42607Z has a depth of 556 mm.Each dishwasher has a separate compartment for softening salt. It opens when you turn the knob on the compartment. The softening salt can then be poured into the compartment by means of a funnel.In the case of a smelly dishwasher, you can take the following steps: - Clean the filters - Clean the spray arms - Clean the door rubbers - Run a hot wash program - Run an empty machine with a dishwasher cleanerThe AEG FSB42607Z has energy label E.It is not recommended to rinse dirty dishes before placing them in the dishwasher. For the life cycle of the machine, it is better to put everything dirty in the dishwasher. The grease on the dirty dishes is the lubrication for the pump in the machine.The average amount used is about 25 grams of dishwashing detergent. It is recommended to follow the advice on the packaging.Yes, the manual of the AEG FSB42607Z is available in English. Is your question not listed? Ask your question herePage 21View the manual for the AEG FSB42607Z here, for free. This manual comes under the category dishwashers and has been rated by 13 people with an average of a 8.1. This manual is available in the following languages: English. Do you have a question about the AEG FSB42607Z or do you need help?Ask your question hereBelow you will find the product specifications and the manual specifications of the AEG FSB42607Z.The AEG FSB42607Z dishwasher is a full-size appliance that offers efficient and convenient cleaning for your dishes. With a capacity of 13 place settings, it can hold a large amount of dirty dishes, allowing you to clean them all in one cycle. Featuring a noise level of 46 dB, this dishwasher operates quietly, ensuring a peaceful environment in your kitchen. Its touch control panel makes it easy to operate, allowing you to select the desired settings with a simple touch. The AEG FSB42607Z dishwasher is compatible with both cold and hot water fill, providing flexibility based on your preferences. It offers five different washing programs, allowing you to choose the most suitable one for your specific needs. Additionally, it includes a delayed start timer, which enables you to set a desired start time for the washing cycle, providing convenience and flexibility in your daily routine. With a cycle time of 240 minutes, this dishwasher ensures thorough cleaning of your dishes, eliminating any traces of dirt or food particles. The product size is 60 centimeters, making it a full-size dishwasher suitable for most kitchens. The cord length is 1.5 meters, providing ample reach for power connection. Overall, the AEG FSB42607Z dishwasher offers reliable performance and durability, thanks to its high-quality construction and materials. By combining its large capacity, quiet operation, and various features, it provides an effective solution for your dish cleaning needs.Appliance placement Fully built-inNumber of place settings 13 place settingsBrandAEGModelFSB42607Z | 911 535 221ProductdishwasherEAN7332543672844LanguageEnglishFileTypeUser manual (PDF), Datasheet (PDF), Energy label (PDF)Appliance placement Fully built-inProduct size Full size (60 cm)Custom panel-ready -Cord length 1.5 mBuilt-in display -Door colour WhiteControl type TouchWater fill Cold, HotControl panel colour BlackNumber of place settings 13 place settingsNoise level 46 dBNumber of washing programs 5Temperature (max) - CDelayed start timer YesCycle time 240 minDelay start (max) 9 hAquasTop function YesAquaSensor function YesDishwashing programs 90min 60C, Eco 45C, QuickNumber of temperature settings 2Drying system AirDryNoise emission class CWi-Fi controlled -Remaining time indication -Child lock -Adjustable feet YesFeet adjustment 8 mmCurrent 10 AAC input voltage 220 - 240 VWater consumption per cycle 9.9 LEnergy efficiency scale A to GAC input frequency 50 HzEnergy efficiency class EEnergy consumption per 100 cycles 94 kWhWidth 596 mmDepth 550 mmHeight 818 mmInstallation compartment width 600 mmInstallation compartment depth 550 mmInstallation compartment height (min) 820 mmInstallation compartment height (max) 880 mm show moreCan't find the answer to your question in the FAQs about the AEG FSB42607Z below.The AEG FSB42607Z has 5 washing programmes. This allows for versatile cleaning options and ensures that different types of dishes and levels of dirtiness can be appropriately addressed.Firstly, ensure that the dishwasher is properly plugged into a power source. Check if the power outlet is functioning by using another device. Additionally, ensure that the dishwasher door is fully closed and latched securely, as the dishwasher will not start if the door is not properly closed.Make sure that you are loading the dishes correctly and not overloading the dishwasher, as overcrowding can hinder proper water circulation. Check that the spray arms are not clogged or blocked by any debris. Also, ensure that the water temperature is hot enough for efficient cleaning, as cooler water may not dissolve detergent effectively.If you hear unusual noises, it is possible that objects, such as utensils or small items, are loose and rattling around in the dishwasher. Verify that all items are correctly placed in the racks and baskets, ensuring that they are not in contact with the spray arms or other moving parts. Additionally, check for any foreign objects in the dishwasher's filter or drain pump, as they may cause noise during operation.Frequent use of the dishwasher can potentially lead to a buildup of food particles and debris, resulting in unpleasant odours. Make sure you are regularly cleaning the dishwasher filter to prevent any accumulation. Additionally, check for any blockages in the drain hose or waste disposal that may contribute to odour. Consider using dishwasher cleaning agents specifically designed to eliminate foul smells.If the water is not draining properly, it could be because the drain hose is clogged or blocked. Check the hose for any obstructions and remove them if there are any. Make sure that the drain hose is positioned correctly and not bent, as this can hinder the water flow. Also, clean the dishwasher's filter to prevent any debris from blocking the drainage system.The AEG FSB42607Z has 13 place settings. This means it can accommodate a large amount of dishes, which is great for families or those who entertain frequently.The AEG FSB42607Z has a noise level of 46 dB. This noise level is considered low and will not disturb daily activities or conversations in the surrounding area.The AEG FSB42607Z is a full-size dishwasher, measuring 60 cm in width. This size is standard for most dishwashers and will fit seamlessly into most kitchen layouts.Yes, the AEG FSB42607Z has a delayed start timer. This feature allows the user to set a time for the dishwasher to start its cycle, which can be convenient for running the dishwasher during off-peak hours or when away from home.The AEG FSB42607Z has a height of 818 mm.The AEG FSB42607Z has a width of 596 mm.The AEG FSB42607Z has a depth of 550 mm.Each dishwasher has a separate compartment for softening salt. It opens when you turn the knob on the compartment. The softening salt can then be poured into the compartment by means of a funnel.In the case of a smelly dishwasher, you can take the following steps: - Clean the filters - Clean the spray arms - Clean the door rubbers - Run a hot wash program - Run an empty machine with a dishwasher cleanerThe AEG FSB42607Z has energy label E.It is not recommended to rinse dirty dishes before placing them in the dishwasher. For the life cycle of the machine, it is better to put everything dirty in the dishwasher. The grease on the dirty dishes is the lubrication for the pump in the machine.The average amount used is about 25 grams of dishwashing detergent. It is recommended to follow the advice on the packaging.Yes, the manual of the AEG FSB42607Z is available in English. Is your question not listed? Ask your question herePage 21View the manual for the AEG FSB42607Z here, for free. This manual comes under the category dishwashers and has been rated by 13 people with an average of a 8.1. This manual is available in the following languages: English. Do you have a question about the AEG FSB42607Z or do you need help?Ask your question hereBelow you will find the product specifications and the manual specifications of the AEG FSB42607Z.The AEG FSB42607Z dishwasher is a full-size appliance that offers efficient and convenient cleaning for your dishes. With a capacity of 13 place settings, it can hold a large amount of dirty dishes, allowing you to clean them all in one cycle. Featuring a noise level of 46 dB, this dishwasher operates quietly, ensuring a peaceful environment in your kitchen. Its touch control panel makes it easy to operate, allowing you to select the desired settings with a simple touch. The AEG FSB42607Z dishwasher is compatible with both cold and hot water fill, providing flexibility based on your preferences. It offers five different washing programs, allowing you to choose the most suitable one for your specific needs. Additionally, it includes a delayed start timer, which enables you to set a desired start time for the washing cycle, providing convenience and flexibility in your daily routine. With a cycle time of 240 minutes, this dishwasher ensures thorough cleaning of your dishes, eliminating any traces of dirt or food particles. The product size is 60 centimeters, making it a full-size dishwasher suitable for most kitchens. The cord length is 1.5 meters, providing ample reach for power connection. Overall, the AEG FSB42607Z dishwasher offers reliable performance and durability, thanks to its high-quality construction and materials. By combining its large capacity, quiet operation, and various features, it provides an effective solution for your dish cleaning needs.Appliance placement Fully built-inNumber of place settings 13 place settingsBrandAEGModelFSB42607Z | 911 535 221ProductdishwasherEAN7332543672844LanguageEnglishFileTypeUser manual (PDF), Datasheet (PDF), Energy label (PDF)Appliance placement Fully built-inProduct size Full size (60 cm)Custom panel-ready -Cord length 1.5 mBuilt-in display -Door colour WhiteControl type TouchWater fill Cold, HotControl panel colour BlackNumber of place settings 13 place settingsNoise level 46 dBNumber of washing programs 5Temperature (max) - CDelayed start timer YesCycle time 240 minDelay start (max) 9 hAquasTop function YesAquaSensor function YesDishwashing programs 90min 60C, Eco 45C, QuickNumber of temperature settings 2Drying system AirDryNoise emission class CWi-Fi controlled -Remaining time indication -Child lock -Adjustable feet YesFeet adjustment 8 mmCurrent 10 AAC input voltage 220 - 240 VWater consumption per cycle 9.9 LEnergy efficiency scale A to GAC input frequency 50 HzEnergy efficiency class EEnergy consumption per 100 cycles 94 kWhWidth 596 mmDepth 550 mmHeight 818 mmInstallation compartment width 600 mmInstallation compartment depth 550 mmInstallation compartment height (min) 820 mmInstallation compartment height (max) 880 mm show moreCan't find the answer to your question in the FAQs about the AEG FSB42607Z below.The AEG FSB42607Z has 5 washing programmes. This allows for versatile cleaning options and ensures that different types of dishes and levels of dirtiness can be appropriately addressed.Firstly, ensure that the dishwasher is properly plugged into a power source. Check if the power outlet is functioning by using another device. Additionally, ensure that the dishwasher door is fully closed and latched securely, as the dishwasher will not start if the door is not properly closed.Make sure that you are loading the dishes correctly and not overloading the dishwasher, as overcrowding can hinder proper water circulation. Check that the spray arms are not clogged or blocked by any debris. Also, ensure that the water temperature is hot enough for efficient cleaning, as cooler water may not dissolve detergent effectively.If you hear unusual noises, it is possible that objects, such as utensils or small items, are loose and rattling around in the dishwasher. Verify that all items are correctly placed in the racks and baskets, ensuring that they are not in contact with the spray arms or other moving parts. Additionally, check for any foreign objects in the dishwasher's filter or drain pump, as they may cause noise during operation.Frequent use of the dishwasher can potentially lead to a buildup of food particles and debris, resulting in unpleasant odours. Make sure you are regularly cleaning the dishwasher filter to prevent any accumulation. Additionally, check for any blockages in the drain hose or waste disposal that may contribute to odour. Consider using dishwasher cleaning agents specifically designed to eliminate foul smells.If the water is not draining properly, it could be because the drain hose is clogged or blocked. Check the hose for any obstructions and remove them if there are any. Make sure that the drain hose is positioned correctly and not bent, as this can hinder the water flow. Also, clean the dishwasher's filter to prevent any debris from blocking the drainage system.The AEG FSB42607Z has 13 place settings. This means it can accommodate a large amount of dishes, which is great for families or those who entertain frequently.The AEG FSB42607Z has a noise level of 46 dB. This noise level is considered low and will not disturb daily activities or conversations in the surrounding area.The AEG FSB42607Z is a full-size dishwasher, measuring 60 cm in width. This size is standard for most dishwashers and will fit seamlessly into most kitchen layouts.Yes, the AEG FSB42607Z has a delayed start timer. This feature allows the user to set a time for the dishwasher to start its cycle, which can be convenient for running the dishwasher during off-peak hours or when away from home.The AEG FSB42607Z has a height of 818 mm.The AEG FSB42607Z has a width of 596 mm.The AEG FSB42607Z has a depth of 550 mm.Each dishwasher has a separate compartment for softening salt. It opens when you turn the knob on the compartment. The softening salt can then be poured into the compartment by means of a funnel.In the case of a smelly dishwasher, you can take the following steps: - Clean the filters - Clean the spray arms - Clean the door rubbers - Run a hot wash program - Run an empty machine with a dishwasher cleanerThe AEG FSB42607Z has energy label E.It is not recommended to rinse dirty dishes before placing them in the dishwasher. For the life cycle of the machine, it is better to put everything dirty in the dishwasher. The grease on the dirty dishes is the lubrication for the pump in the machine.The average amount used is about 25 grams of dishwashing detergent. It is recommended to follow the advice on the packaging.Yes, the manual of the AEG FSB42607Z is available in English. Is your question not listed? Ask your question herePage 25View the manual for the AEG FSB42607Z here, for free. This manual comes under the category dishwashers and has been rated by 13 people with an average of a 8.1. This manual is available in the following languages: English. Do you have a question about the AEG FSB42607Z or do you need help?Ask your question hereBelow you will find the product specifications and the manual specifications of the AEG FSB42607Z.The AEG FSB42607Z dishwasher is a full-size appliance that offers efficient and convenient cleaning for your dishes. With a capacity of 13 place settings, it can hold a large amount of dirty dishes, allowing you to clean them all in one cycle. Featuring a noise level of 46 dB, this dishwasher operates quietly, ensuring a peaceful environment in your kitchen. Its touch control panel makes it easy to operate, allowing you to select the desired settings with a simple touch. The AEG FSB42607Z dishwasher is compatible with both cold and hot water fill, providing flexibility based on your preferences. It offers five different washing programs, allowing you to choose the most suitable one for your specific needs. Additionally, it includes a delayed start timer, which enables you to set a desired start time for the washing cycle, providing convenience and flexibility in your daily routine. With a cycle time of 240 minutes, this dishwasher ensures thorough cleaning of your dishes, eliminating any traces of dirt or food particles. The product size is 60 centimeters, making it a full-size dishwasher suitable for most kitchens. The cord length is 1.5 meters, providing ample reach for power connection. Overall, the AEG FSB42607Z dishwasher offers reliable performance and durability, thanks to its high-quality construction and materials. By combining its large capacity, quiet operation, and various features, it provides an effective solution for your dish cleaning needs.Appliance placement Fully built-inNumber of place settings 13 place settingsBrandAEGModelFSB42607Z | 911 535 221ProductdishwasherEAN7332543672844LanguageEnglishFileTypeUser manual (PDF), Datasheet (PDF), Energy label (PDF)Appliance placement Fully built-inProduct size Full size (60 cm)Custom panel-ready -Cord length 1.5 mBuilt-in display -Door colour WhiteControl type TouchWater fill Cold, HotControl panel colour BlackNumber of place settings 13 place settingsNoise level 46 dBNumber of washing programs 5Temperature (max) - CDelayed start timer YesCycle time 240 minDelay start (max) 9 hAquasTop function YesAquaSensor function YesDishwashing programs 90min 60C, Eco 45C, QuickNumber of temperature settings 2Drying system AirDryNoise emission class CWi-Fi controlled -Remaining time indication -Child lock -Adjustable feet YesFeet adjustment 8 mmCurrent 10 AAC input voltage 220 - 240 VWater consumption per cycle 9.9 LEnergy efficiency scale A to GAC input frequency 50 HzEnergy efficiency class EEnergy consumption per 100 cycles 94 kWhWidth 596 mmDepth 550 mmHeight 818 mmInstallation compartment width 600 mmInstallation compartment depth 550 mmInstallation compartment height (min) 820 mmInstallation compartment height (max) 880 mm show moreCan't find the answer to your question in the FAQs about the AEG FSB42607Z below.The AEG FSB42607Z has 5 washing programmes. This allows for versatile cleaning options and ensures that different types of dishes and levels of dirtiness can be appropriately addressed.Firstly, ensure that the dishwasher is properly plugged into a power source. Check if the power outlet is functioning by using another device. Additionally, ensure that the dishwasher door is fully closed and latched securely, as the dishwasher will not start if the door is not properly closed.Make sure that you are loading the dishes correctly and not overloading the dishwasher, as overcrowding can hinder proper water circulation. Check that the spray arms are not clogged or blocked by any debris. Also, ensure that the water temperature is hot enough for efficient cleaning, as cooler water may not dissolve detergent effectively.If you hear unusual noises, it is possible that objects, such as utensils or small items, are loose and rattling around in the dishwasher. Verify that all items are correctly placed in the racks and baskets, ensuring that they are not in contact with the spray arms or other moving parts. Additionally, check for any foreign objects in the dishwasher's filter or drain pump, as they may cause noise during operation.Frequent use of the dishwasher can potentially lead to a buildup of food particles and debris, resulting in unpleasant odours. Make sure you are regularly cleaning the dishwasher filter to prevent any accumulation. Additionally, check for any blockages in the drain hose or waste disposal that may contribute to odour. Consider using dishwasher cleaning agents specifically designed to eliminate foul smells.If the water is not draining properly, it could be because the drain hose is clogged or blocked. Check the hose for any obstructions and remove them if there are any. Make sure that the drain hose is positioned correctly and not bent, as this can hinder the water flow. Also, clean the dishwasher's filter to prevent any debris from blocking the drainage system.The AEG FSB42607Z has 13 place settings. This means it can accommodate a large amount of dishes, which is great for families or those who entertain frequently.The AEG FSB42607Z has a noise level of 46 dB. This noise level is considered low and will not disturb daily activities or conversations in the surrounding area.The AEG FSB42607Z is a full-size dishwasher, measuring 60 cm in width. This size is standard for most dishwashers and will fit seamlessly into most kitchen layouts.Yes, the AEG FSB42607Z has a delayed start timer. This feature allows the user to set a time for the dishwasher to start its cycle, which can be convenient for running the dishwasher during off-peak hours or when away from home.The AEG FSB42607Z has a height of 818 mm.The AEG FSB42607Z has a width of 596 mm.The AEG FSB42607Z has a depth of 550 mm.Each dishwasher has a separate compartment for softening salt. It opens when you turn the knob on the compartment. The softening salt can then be poured into the compartment by means of a funnel.In the case of a smelly dishwasher, you can take the following steps: - Clean the filters - Clean the spray arms - Clean the door rubbers - Run a hot wash program - Run an empty machine with a dishwasher cleanerThe AEG FSB42607Z has energy label E.It is not recommended to rinse dirty dishes before placing them in the dishwasher. For the life cycle of the machine, it is better to put everything dirty in the dishwasher. The grease on the dirty dishes is the lubrication for the pump in the machine.The average amount used is about 25 grams of dishwashing detergent. It is recommended to follow the advice on the packaging.Yes, the manual of the AEG FSB42607Z is available in English. Is your question not listed? Ask your question hereHow can financial brands set themselves apart through visual storytelling? Our experts explainhow.Learn MoreThe Motorsport Images Collections captures events from 1895 to today's most recentcoverage.Discover The CollectionCurated, compelling, and worth your time. Explore our latest gallery of EditorsPicks.Browse Editors' FavoritesHow can financial brands set themselves apart through visual storytelling? Our experts explainhow.Learn MoreThe Motorsport Images Collections captures events from 1895 to today's most recentcoverage.Discover The CollectionCurated, compelling, and worth your time. Explore our latest gallery of EditorsPicks.Browse Editors' Favorites

Aeg dishwasher first time use. Aeg integrated dishwasher door fitting instructions. Aeg integrated dishwasher instructions. Aeg integrated dishwasher. Aeg induction installation. Aeg vaatwasser installeren. Installatie aeg inductiekookplaat. Aeg inbouw vaatwasser installeren.