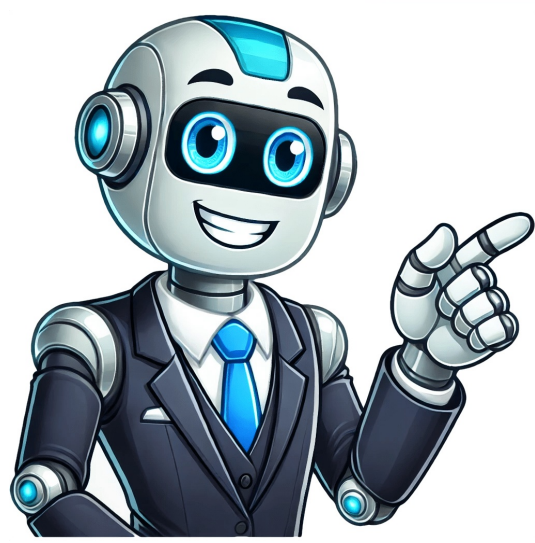


Click to verify



2014 rav4 user manual

[illegible]

bolts * Remove the lamp assembly by pulling it directly backward from the rear of the vehicle * Turn the bulb base counter-clockwise * Set the new light bulb by aligning the 3 tabs with the mounting and inserting it For front wheel lights (low beams): * Turn the steering wheel to the opposite side of the light bulb you are replacing * Remove the securing clip and washer tank inlet * Disconnect the connector and turn the cover clockwise * Unplug the connector while pulling the lock release * Turn the bulb base counter-clockwise * Set the new light bulb by aligning the 3 tabs with the mounting and inserting it For fog lights: * Turn the steering wheel to the opposite side of the light bulb you are replacing * Remove the securing clip and washer tank inlet * Disconnect the connector and turn the cover clockwise * Unplug the connector while pulling the lock release * Turn the bulb base counter-clockwise * Set the new light bulb by aligning the 3 tabs with the mounting and inserting it

For tail lights, Back-up lights, License plate lights, and more! Open the back door, remove the cover, and turn the bulb base counter-clockwise to replace the light bulb. When installing, reverse the steps listed. Temporary condensation on the headlight lens doesn't indicate a malfunction; contact your Toyota dealer for more information if large drops of water build up. CAUTION: Replacing light bulbs! Turn off the lights first, and don't touch the glass portion with bare hands - use a clean dry cloth instead. If trouble arises, refer to emergency flashers (page 600), stopping in an emergency (page 601), towing (pages 602-607), or installing towing eyelets (page 604). Before emergency towing, release the parking brake, shift to neutral (N), and vehicles without a smart key should follow the necessary procedures. Turn the engine switch to the "ACC" or "ON" position. For vehicles with smart key systems, turn it to ACCESSORY mode for engine off or IGNITION ON for engine running. Page 608 If you notice any unusual symptoms, your vehicle may need adjustment or repair. Contact a Toyota dealer as soon as possible. If you think something is wrong, look out for these signs: fluid leaks under the vehicle (except for normal water drips after using the air conditioning), fuel pump shut off system activation, low engine oil pressure warning light, electric power steering system warning light, lane departure alert warning lights (if equipped), smart key system indicator light (if equipped), or intuitive parking assist indicator light. If a light comes on and stays on, it may indicate a malfunction. Stop the vehicle immediately to avoid potential danger. Page 612 If you see the low engine oil pressure warning light, have your vehicle inspected by a Toyota dealer right away. Failure to investigate could lead to system malfunctions or accidents. In the event of an emergency, follow the correction procedures outlined in this section. For vehicles equipped with a smart key system, ensure that the warning light goes off after correcting any suspected issues. If the light remains on, consult your Toyota dealer as soon as possible. If the electronic key battery is low, replace it according to the manufacturer's instructions. Additionally, check if the fuel tank cap is loose and tighten it securely. The warning light will typically go off after several driving trips. In situations where there is excessive snow or ice accumulation on the vehicle, especially around wheels and wheel housings, take necessary precautions to ensure safe operation. Similarly, when using non-genuine Toyota wheels, be aware that the tire pressure warning system may not function properly with certain types of tires. If both the ABS and brake system warning lights remain illuminated, stop your vehicle in a safe location immediately and contact your Toyota dealer. Failing to do so may result in an accident causing death or serious injury. Regular maintenance is crucial for the tires, including the spare (if provided), which should be checked monthly when cold and inflated according to the recommended pressure listed on the vehicle placard or tire inflation pressure label. In cases where the TPMS malfunctions, ensure that replacement or alternate tires or wheels are installed correctly to prevent system failure. If you encounter a flat tire, do not continue driving and instead replace it with the spare provided. Remember to follow proper procedures when using the tire jack, as improper use may result in serious injury or death. Always refer to your vehicle's owner's manual for specific guidance on tire maintenance and replacement. For loosening For tightening RAV4 OM OM42A04U (U) Page 631 7-2. Steps to take in an emergency Taking out the spare tire Remove rear deck board Loosen center fastener securing spare tire CAUTION Be careful not to catch fingers or other body parts between spare tire and vehicle body Page 632 7-2. Steps to take in an emergency Replacing a flat tire Chock tires Flat tire Wheel chock positions Left-hand side Behind rear right-hand side tire Front Right-hand side In front of front left-hand side tire Rear Right-hand side In front of front right-hand side tire Left-hand side In front of front left-hand side tire Page 633 7-2. Steps to take in an emergency Assemble jack handle Turn tire jack portion hand until notch of jack is in contact with jack point Jack points are located under rocker panel They indicate jack point positions Page 634 CAUTION If there are any cracks or deformations in bolt screws, nut threads or bolt holes of wheel have vehicle inspected by Toyota dealer When installing wheel nuts ensure they are tightened with tapered ends facing inward Page 635 7-2. Steps to take in an emergency Installing spare tire Remove dirt or foreign matter from wheel contact surface If foreign matter is on wheel contact surface wheel nuts may loosen while vehicle is in motion causing tire to come off Page 636 7-2. Steps to take in an emergency Lower vehicle Firmly tighten each wheel nut two or three times in order shown in illustration Tightening torque: 76 ft•lbf (103 N•m, 10.5 kgf•m) For vehicles with full wheel ornament reinstall wheel ornament Page 637 7-2. Steps to take in an emergency Stowing flat tire (vehicles with compact spare tire) Type A For vehicles with aluminum wheel Remove center wheel ornament by pushing from reverse side Page 638 7-2. Steps to take in an emergency Type B For vehicles with aluminum wheel Remove center wheel ornament by pushing from reverse side Place flat tire on deck board Hook one end of belt to cargo hook on far left side Page 639 7-2. Steps to take in an emergency Pull belt as shown in illustration to secure tire CAUTION Compact spare tire (if equipped) Use compact spare tire temporarily and only in emergency Do not drive at speeds in excess of 50 mph (80 km/h) when compact spare tire is installed If your RAV4's engine won't start despite following proper starting procedures, consider these points: The starter motor operates normally, but the engine still won't start. For vehicles with smart key systems, there may be a malfunction in the steering lock system. Contact your Toyota dealer if you can't repair or diagnose the issue. If the electronic key doesn't operate properly, try the following: 1. Set the parking brake. 2. Firmly depress the brake pedal to turn on the smart key system indicator light (green). 3. Press the engine switch. If the engine still won't start, contact your Toyota dealer. In case of an emergency, stopping the engine is crucial: Shift the shift lever to P and press the engine switch as you normally would when stopping the engine. When dealing with a discharged battery: 1. Use jumper cables and a second vehicle's 12-volt battery to jump-start the vehicle. 2. Once the engine starts, remove the jumper cables in reverse order, then have your vehicle inspected at your Toyota dealer as soon as possible. For recharging or replacing the battery (vehicles with smart key systems): * If the battery is discharged, you may not be able to unlock doors using the smart key system. Use the wireless remote control or mechanical key instead. * CAUTION: When handling the battery, wear safety glasses and avoid skin contact with acidic electrolyte. 1. If the fans are not working, stop your car immediately and contact a Toyota dealership for assistance. 2. If the fans are working, take your car to a Toyota dealership for inspection. Your vehicle requires "Toyota Genuine Differential Gear Oil" to satisfy the specified requirements. Please contact your Toyota dealer for further details regarding this specification. Brakes specifications: - Front brake models: 15-inch with a minimum pedal clearance of 4.02 inches. - Rear brake models: 16-inch with a minimum pedal clearance of 0.04 to 0.24 inches. Tires and wheels specifications: - Recommended tire size: 225/65R17 102H - Tire inflation pressure: Front and rear - 33 psi (230 kPa, 2.3 kgf/cm or bar). Light bulb specifications: - Headlights: High beam 9005, Low beam 9005 - Fog lights: Front turn signal lights/7444 28/8 parking lights - Exterior Stop/tail lights and rear side marker lights: 7443 21/5 Recommendations for gasoline use: - Use gasoline with detergent additives to avoid engine deposits. - Avoid using gasoline containing MMT, as it may affect emission control systems. Tire information specifications: - Typical tire symbols - DOT and Tire Identification Number (TIN) - Location of treadwear indicators - Tire ply composition and materials Tire size and usage specifications: - Typical tire size information - Section width (millimeters) - Aspect ratio (tire height to section width) - Tire construction code (R = Radial, D = Diagonal) - Wheel diameter (inches) - Load index (2 digits or 3 digits) Toyota RAV4 OM OM42A04U (U) Tire Information The provided text is from the U.S. Department of Transportation, providing information on uniform tire quality grading for Toyota vehicles. The document explains various tire-related terms and specifications, including temperature grades, glossary of tire terminology, and customization options. Customization settings for vehicle functions include the automatic door lock system, which can be activated after a specified time if a driver fails to open a door. The default setting for this feature is 7 seconds for the buzzer and level 1 to 6 operation signal, while emergency flashers are triggered at level 7. Another customization option involves adjusting light sensor sensitivity, allowing drivers to set standards between -2 to 2, which controls when headlights automatically turn off after doors close. The interior lights can also be programmed to turn off after a specified time or engine shutdown. The vehicle's seat belt reminder system is another customizable feature, linked to the driver's seat and speed, with the default setting being "5" for vehicles equipped with power back doors and driving position memory systems. Drivers must ensure proper ventilation when customizing settings in a closed area like a garage, as exhaust gases can accumulate. **Important Safety Information** **SRS Airbag Instructions for Canadian Owners (in French)** The following section provides a French explanation of SRS airbag instructions, extracted from the SRS airbag section in this manual. For more detailed instructions in English, please refer to the SRS airbag section. **Components and Their Functions** * The SRS airbags can help protect the driver's and passenger's heads and chests from impacts with interior components. * The knee airbag for the driver can help prevent injuries. * Components of the SRS system include: + Lateral impact sensors (front and rear) + Airbag module + ECU (Electronic Control Unit) + Seat position sensor **Important Precautions** * Always wear a seatbelt when driving or riding in your vehicle. * Never install a child restraint device on the front passenger seat, even if the "AIR BAG OFF" light is on. * Do not allow anyone to sit with their feet on the floor or their head and hands outside the vehicle. * Do not place anything on or press against sensitive areas such as the dashboard, steering column, or lower panel. **Maintenance and Repairs** * If any storage spaces for SRS airbags (e.g. steering column, front and rear side rail) are damaged or cracked, have them replaced by a Toyota dealership. * Do not modify your vehicle in any way without consulting a Toyota dealership first. Failure to do so could result in incorrect functioning of the SRS airbags or accidental deployment, which can cause serious injury or death. Note: This paraphrased version is intended to provide a general summary of the original text and may not include all the details or nuances of the original content. If your Toyota's premium audio system with navigation and Entune Audio Plus isn't working as expected, refer to the "NAVIGATION MULTIMEDIA SYSTEM OWNER'S MANUAL" for troubleshooting tips. You can't lock or unlock the doors if you lose your keys - in this case, get a new key made by your dealer. Vehicles with smart key systems are at higher risk of theft if you misplace electronic keys. * Maintenance schedule and requirements * 3 maintenance checks for every 5,000 miles * Oil change interval: every 7,500 miles or as recommended by the owner * Vehicle systems and components * LATCH anchors for child seats * Power steering system with electric power * Rear differential oil changes * Electrical systems * Warning lights and indicators * Fuses and replacement procedures * Malfunction indicator lamp * Safety features * Low fuel level warning * Seat belt reminder light * Slip indicator for low engine oil pressure